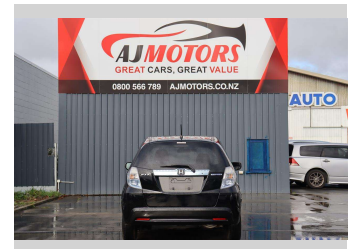
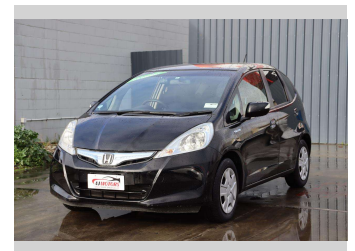
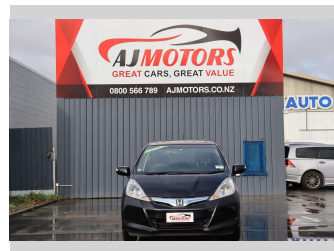



2012 Honda Fit Hybrid




Purchase Price **\$10,980**

Includes GST
Excludes on-road costs of \$695

Finance may be available on this vehicle. Ask one of our friendly staff for more information.



Gain peace of mind with Mechanical Breakdown Insurance. **Ask us how.**



Top features

- » ABS
- » Air Conditioning
- » Alloy Wheels
- » Auto air-condition
- » Auto headlight
- » Bluetooth
- » Central Locking
- » Central Locking
- » Child seat anchor poin...
- » Cruise control
- » Dynamic Chassis Contro...
- » Eco Mode
- » Inside rear view mirro...
- » Keyless entry
- » Multi-function steerin...
- » Power window
- » Rear Wiper
- » Side Skirts

Body Style
4 door, Hatchback

Odometer
41,100 km

Engine
1339 cc, Hybrid

Fuel Type
Hybrid


Transmission
Automatic

Wheels
15", Hubcap

VIN
7AT08G2YX23212923

Interior
Black, Plastic

Safety



Based on 2023 UCSR rating for 08-14 models

Reg No.
-

Ext Colour
Black

History
Ex-Overseas

Seats
5 seats, Cloth

CO2 Emissions
★★★★☆
113 grams/km

Energy Economy
★★★★☆☆
Annual fuel cost of \$1,840
4.7L per 100km

Cost per year is an estimate based on petrol price of \$2.80 per litre and an average distance of 14000 km. Emissions and Energy Economy figures standardised to 3P WLTP.

Stock ID: 21194



AJ Motors Sockburn | Phone 0800 566 789 | Email sockburn@ajmotors.co.nz
466 Blenheim Road, Sockburn, Christchurch 8042, New Zealand
www.ajmotors.co.nz