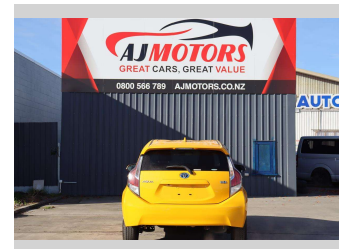
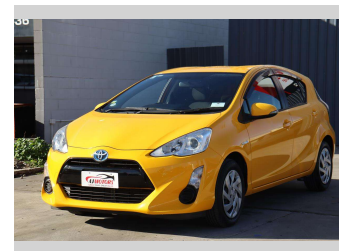
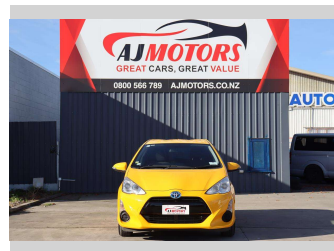



2015 Toyota Aqua S Push button



Purchase Price **\$12,980**

Includes GST
Excludes on-road costs of \$695

Finance may be available on this vehicle. Ask one of our friendly staff for more information.



Gain peace of mind with Mechanical Breakdown Insurance. **Ask us how.**



Top features

- » ABS
- » Air Conditioning
- » Auto air-condition
- » Auto Fold Mirrors
- » Bluetooth
- » Central Locking
- » Central Locking
- » Central Locking
- » Child seat anchor poin...
- » Climate Control
- » Dynamic Chassis Contro...
- » Eco Mode
- » Electric Mirrors (Retr...
- » EV mode
- » heated rear window
- » HYBRID SYNERGY DRIVE
- » Inside rear view mirro...
- » Keyless entry

Body Style
5 door, Hatchback

Odometer
110,000 km

Engine
1500 cc, Hybrid

Fuel Type
Hybrid

Transmission
CVT, Front Wheel

Wheels
15", Hubcap

VIN
7AT0H65YX24467665

Interior
Black, Plastic

Safety



Based on 2023 UCSR rating for 12-20 models

Reg No.
-

Ext Colour
Yellow

History
Ex-Overseas

Seats
5 seats, Cloth

CO2 Emissions
★★★★☆
92 grams/km

Energy Economy
★★★★☆

Annual fuel cost of \$1,530
3.9L per 100km

Cost per year is an estimate based on petrol price of \$2.80 per litre and an average distance of 14000 km. Emissions and Energy Economy figures standardised to 3P WLTP.

Stock ID: 19064



AJ Motors Sockburn | Phone 0800 566 789 | Email sockburn@ajmotors.co.nz
466 Blenheim Road, Sockburn, Christchurch 8042, New Zealand
www.ajmotors.co.nz