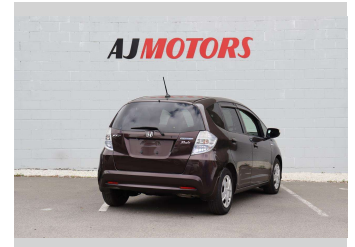
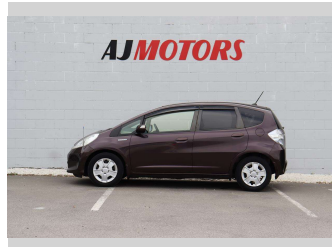


# 2012 Honda Fit Hybrid



Purchase Price

**\$9,980**

Includes GST  
Excludes on-road costs of \$695

Finance may be available on this vehicle. Ask one of our friendly staff for more information.

finance  
**NOW**

Gain peace of mind with Mechanical Breakdown Insurance. **Ask us how.**

 **autosure**  
INSURANCE

## Top features

- » ABS
- » Auto air-condition
- » Auto headlight
- » Central Locking
- » Cruise control
- » Eco Mode
- » Rear Wiper
- » Reversing Camera
- » Traction control

Body Style

**4 door, Hatchback**

Odometer

**101,500 km**

Engine

**1339 cc, Hybrid**

Fuel Type

**Hybrid**

Transmission

**Automatic, 2WD**

Wheels

**15", Hubcap**

VIN

**7AT08G2YX24217383**

Interior

**Black and Brown**

Safety



Based on 2024 UCSR rating for 08-14 models

Reg No.

-

Ext Colour

**Purple**

History

**Ex-Overseas**

Seats

**5 seats**

CO2 Emissions

★★★★☆

**113 grams/km**

Energy Economy

★★★★☆☆

**Annual fuel cost of \$1,840  
4.7L per 100km**

Cost per year is an estimate based on petrol price of \$2.80 per litre and an average distance of 14000 km. Emissions and Energy Economy figures standardised to 3P WLTP.

**Stock ID: 23510**



AJ Motors Sockburn | Phone 0800 566 789 | Email sockburn@ajmotors.co.nz  
466 Blenheim Road, Sockburn, Christchurch 8042, New Zealand  
www.ajmotors.co.nz