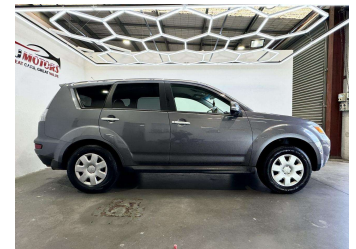



2010 Mitsubishi Outlander




Purchase Price **POA**
Includes GST, Registration & Licensing

Finance may be available on this vehicle. Ask one of our friendly staff for more information.



Gain peace of mind with Mechanical Breakdown Insurance. **Ask us how.**



Top features

- » AA Appraised
- » ABS
- » Air Conditioning
- » Auto headlight
- » Auto Stability Control
- » Central Locking
- » Central Locking
- » Climate Control
- » Cruise control
- » Electric Mirrors (Retr...
- » heated rear window
- » Multi-function steerin...
- » Power window
- » Rear Wiper
- » smart key
- » Tow Bar
- » Traction control

Body Style
5 door, RV/SUV

Odometer
123,051 km

Engine
1998 cc, Internal Combustion


Fuel Type
Petrol

Transmission
Automatic

Wheels
Hubcap

VIN
JMAXTCW4WAZ900114

Interior
Black, Fabric

Safety

Based on 2023 UCSR rating for 06-12 models

Reg No.
FPJ211

Ext Colour
Grey

History
-

Seats
7 seats, Fabric

CO2 Emissions
★★★★☆
210 grams/km

Energy Economy
★★★★☆
Annual fuel cost of \$3,450
8.8L per 100km

Cost per year is an estimate based on petrol price of \$2.80 per litre and an average distance of 14000 km. Emissions and Energy Economy figures standardised to 3P WLTP.

Stock ID: 23125



AJ Motors Henderson | Phone 0800 566 789 | Email prestige@ajmotors.co.nz
34 Paramount Drive, Henderson, Auckland 0610, New Zealand
www.ajmotors.co.nz