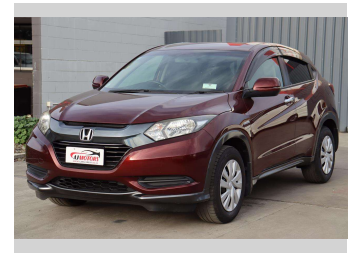
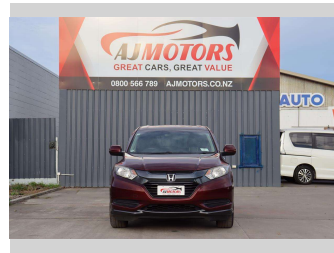



# 2015 Honda Vezel Hybrid Cruise Control



**Purchase Price** **\$17,987**

Includes GST  
Excludes on-road costs of \$695

Finance may be available on this vehicle. Ask one of our friendly staff for more information.



Gain peace of mind with Mechanical Breakdown Insurance. **Ask us how.**



**Top features**

- » ABS
- » Air Conditioning
- » Auto air-condition
- » Auto Hold
- » Central Locking
- » Central Locking
- » Central Locking
- » Child seat anchor poin...
- » Climate Control
- » Cruise control
- » Cruise Control
- » Dual air-condition
- » Eco Mode
- » Electric Mirror
- » Electric Mirrors
- » Electronic Hand Brake
- » heated rear window
- » HYBRID SYNERGY DRIVE

Body Style  
**4 door, RV/SUV**

Odometer  
**65,300 km**

Engine  
**1500 cc, Hybrid**

Fuel Type  
**Hybrid**

Transmission  
**Automatic, Front Wheel**

Wheels  
**16", Hubcap**

VIN  
**7AT08GDHX24105771**

Interior  
**Black, Plastic**

Safety



Based on 2023 VSRR rating

Reg No.

-

Ext Colour  
**Red**

History  
**Ex-Overseas**

Seats  
**5 seats, Cloth**

CO2 Emissions  
**★★★★☆**  
**108 grams/km**

Energy Economy  
**★★★★☆**

**Annual fuel cost of \$1,800**  
**4.6L per 100km**

Cost per year is an estimate based on petrol price of \$2.80 per litre and an average distance of 14000 km. Emissions and Energy Economy figures standardised to 3P WLTP.

**Stock ID: 19493**



AJ Motors Sockburn | Phone 0800 566 789 | Email sockburn@ajmotors.co.nz  
466 Blenheim Road, Sockburn, Christchurch 8042, New Zealand  
www.ajmotors.co.nz