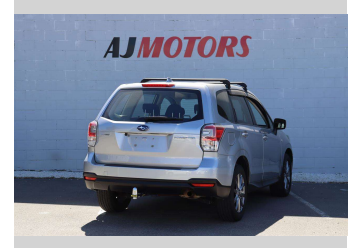



2016 Subaru Forester 2.0i 4WD




Purchase Price **POA**
Includes GST, Registration & Licensing

Finance may be available on this vehicle. Ask one of our friendly staff for more information.



Gain peace of mind with Mechanical Breakdown Insurance. **Ask us how.**



- Top features**
- » ABS
 - » Auto air-condition
 - » Auto Start Stop
 - » Central Locking
 - » Child seat anchor poin...
 - » heated rear window
 - » Inside rear view mirro...
 - » Reversing Camera
 - » Roof Rails
 - » Tow Bar
 - » Traction control

Body Style
4 door, RV/SUV

Odometer
155,100 km

Engine
1990 cc, Internal Combustion

Fuel Type
Petrol

Transmission
CVT, AWD

Wheels
17", Custom Alloys

VIN
7AT0GF17X22082833

Interior
Black, Plastic

Safety



Based on 2023 UCSR rating for 12-21 models

Reg No.
PBP809

Ext Colour
Silver

History
-

Seats
5 seats, Cloth

CO2 Emissions
★★★★☆
186 grams/km

Energy Economy
★★☆☆☆☆

Annual fuel cost of \$3,140
8L per 100km

Cost per year is an estimate based on petrol price of \$2.80 per litre and an average distance of 14000 km. Emissions and Energy Economy figures standardised to 3P WLTP.

Stock ID: 23615



AJ Motors Christchurch | Phone 0800 566 789 | Email christchurch@ajmotors.co.nz
207 Main South Road, Hornby, Christchurch 8042, New Zealand
www.ajmotors.co.nz