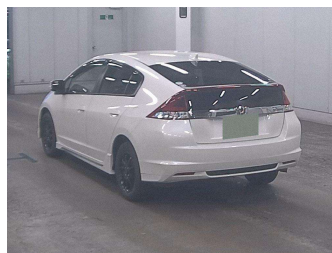


2012 Honda INSIGHT EXCLUSIVE



Purchase Price **POA**
Includes GST, Registration & Licensing

Finance may be available on this vehicle. Ask one of our friendly staff for more information.



Gain peace of mind with Mechanical Breakdown Insurance. **Ask us how.**



Top features
None Listed

Body Style
-
Odometer
138,129 km

Engine
1500 cc
Fuel Type
Hybrid

Transmission
Paddle Shift

Wheels
-

VIN
-

Interior
-

Safety



Based on 2023 VSRR rating

Reg No.

-

Ext Colour

Pearl

History

Ex-Overseas

Seats

-

CO2 Emissions

★★★★☆

125 grams/km

Energy Economy

★★★★☆☆

Annual fuel cost of \$2,040

5.2L per 100km

Cost per year is an estimate based on petrol price of \$2.80 per litre and an average distance of 14000 km. Emissions and Energy Economy figures standardised to 3P WLTP.

Stock ID: 23216



AJ Motors East Tamaki | Phone 0800 566 789 | Email easttamaki@ajmotors.co.nz
53 Springs Road, East Tamaki, Auckland 2013, New Zealand
www.ajmotors.co.nz