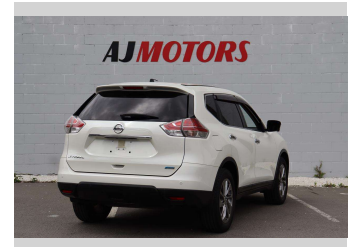
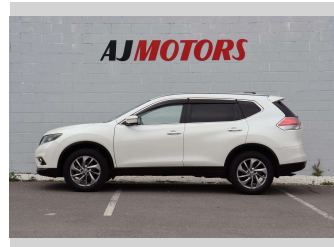


2017 Nissan X-Trail 20XI 4WD



Purchase Price

\$19,980

Includes GST
Excludes on-road costs of \$695

Finance may be available on this vehicle. Ask one of our friendly staff for more information.

finance
NOW

Gain peace of mind with Mechanical Breakdown Insurance. **Ask us how.**

autosure
INSURANCE

Top features

- » 360 Degree Reversing C...
- » ABS
- » Auto air-condition
- » Auto headlight
- » Auto Start Stop
- » Central Locking
- » Cruise control
- » Downhill Assist Contro...
- » Heated Seats
- » Parking Sensors
- » Power Tailgate
- » Push button start
- » Smart key system with...
- » Traction control

Body Style

4 door, RV/SUV

Odometer

108,300 km

Engine

2000 cc, Internal Combustion

Fuel Type

Petrol

Transmission

Automatic, 4WD

Wheels

18", Factory Alloys

VIN

7AT0DH6LX24053955

Interior

Black

Safety



Based on 2024 UCSR rating for 14-22 models

Reg No.

-

Ext Colour

White

History

Ex-Overseas

Seats

5 seats

CO2 Emissions

★★★★☆

165 grams/km

Energy Economy

★★★☆☆

Annual fuel cost of \$2,780

7.1L per 100km

Cost per year is an estimate based on petrol price of \$2.80 per litre and an average distance of 14000 km. Emissions and Energy Economy figures standardised to 3P WLTP.

Stock ID: 24242



AJ Motors Sockburn | Phone 0800 566 789 | Email sockburn@ajmotors.co.nz
393 Ferry Road, Woolston, Christchurch 8023, New Zealand
www.ajmotors.co.nz