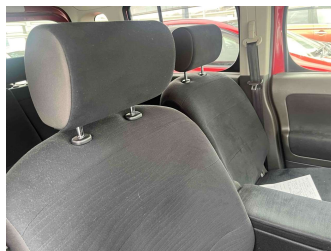


# 2014 Nissan Cube 15X V SELECTION



**Purchase Price**  
Includes GST, Registration & Licensing

**POA**

Finance may be available on this vehicle. Ask one of our friendly staff for more information.



Gain peace of mind with Mechanical Breakdown Insurance. **Ask us how.**



**Top features**

None Listed

Body Style  
-

Odometer  
**89,500 km**

Engine  
**1500 cc**


Fuel Type  
**Petrol**

Transmission  
**CVT**

Wheels  
-

VIN  
-

Interior  
-

Safety  
  
Based on 2024 VSRR rating

Reg No.  
-

Ext Colour  
**Red**

History  
**Ex-Overseas**

Seats  
-

CO2 Emissions  
**★★★★☆**  
**143 grams/km**

Energy Economy  
**★★★★☆☆**  
**Annual fuel cost of \$2,430**  
**6.2L per 100km**

Cost per year is an estimate based on petrol price of \$2.80 per litre and an average distance of 14000 km. Emissions and Energy Economy figures standardised to 3P WLTP.

**Stock ID: 24281**



AJ Motors East Tamaki | Phone 0800 566 789 | Email easttamaki@ajmotors.co.nz  
53 Springs Road, East Tamaki, Auckland 2013, New Zealand  
www.ajmotors.co.nz