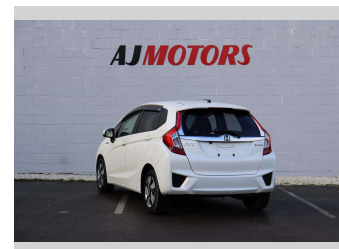
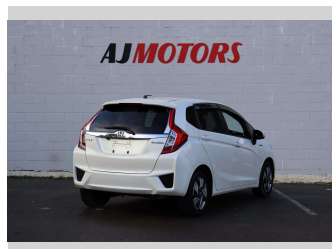
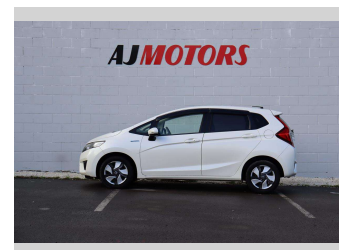



2015 Honda Fit Hybrid F Package




Purchase Price **\$12,980**

Includes GST
Excludes on-road costs of \$695

Finance may be available on this vehicle. Ask one of our friendly staff for more information.



Gain peace of mind with Mechanical Breakdown Insurance. **Ask us how.**



Top features

- » ABS
- » Air Conditioning
- » Auto air-condition
- » Central Locking
- » Central Locking
- » Central Locking
- » Child seat anchor poin...
- » Climate Control
- » Eco Mode
- » Electric Mirror
- » Electric Mirrors
- » heated rear window
- » Inside rear view mirro...
- » Keyless entry
- » Power window
- » Push button start
- » PWR Mode
- » Rear Wiper

Body Style
5 door, Hatchback

Odometer
82,800 km

Engine
1500 cc, Hybrid

Fuel Type
Hybrid


Transmission
Automatic, 2WD

Wheels
15", Hubcap

VIN
7AT08G2YX24110632

Interior
Black, Plastic

Safety



Based on 2023 UCSR rating for 14-20 models

Reg No.
-

Ext Colour
Pearl

History
Ex-Overseas

Seats
5 seats, Cloth

CO2 Emissions
★★★★☆
92 grams/km

Energy Economy
★★★★☆☆
Annual fuel cost of \$1,530
3.9L per 100km

Cost per year is an estimate based on petrol price of \$2.80 per litre and an average distance of 14000 km. Emissions and Energy Economy figures standardised to 3P WLTP.

Stock ID: 20981



AJ Motors Sockburn | Phone 0800 566 789 | Email sockburn@ajmotors.co.nz
466 Blenheim Road, Sockburn, Christchurch 8042, New Zealand
www.ajmotors.co.nz