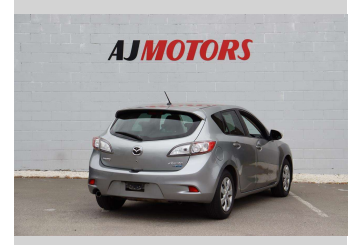


2012 Mazda Axela 1.5L SKYACTIV



Purchase Price

\$9,980

Includes GST
Excludes on-road costs of \$295

Finance may be available on this vehicle. Ask one of our friendly staff for more information.

finance
NOW

Gain peace of mind with Mechanical Breakdown Insurance. **Ask us how.**

autosure
INSURANCE

Top features

- » ABS
- » Air Conditioning
- » Central Locking
- » Central Locking
- » Cruise control
- » Multi-function steering wheel
- » Push button start
- » Reversing Camera
- » Smart key system with front door touch sensors

Body Style

4 door, Hatchback

Odometer

139,200 km

Engine

2000 cc, Internal Combustion

Fuel Type

Petrol

Transmission

Automatic

Wheels

15", Hubcap

VIN

7AT0C13JX21106830

Interior

Black, Plastic

Safety



Based on 2023 UCSR rating for 09-13 models

Reg No.

PAM200

Ext Colour

GRAY

History

-

Seats

5 seats, Cloth

CO2 Emissions

★★★★☆

157 grams/km

Energy Economy

★★★★☆☆

Annual fuel cost of \$2,590

6.6L per 100km

Cost per year is an estimate based on petrol price of \$2.80 per litre and an average distance of 14000 km. Emissions and Energy Economy figures standardised to 3P WLTP.

Stock ID: 23120



AJ Motors Sockburn | Phone 0800 566 789 | Email sockburn@ajmotors.co.nz
466 Blenheim Road, Sockburn, Christchurch 8042, New Zealand
www.ajmotors.co.nz