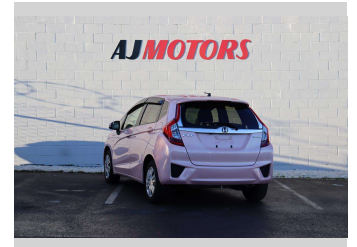
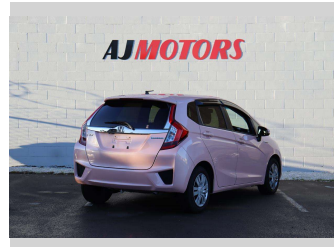
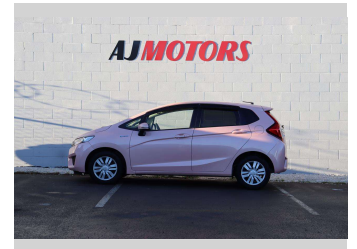
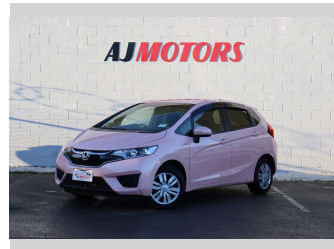


# 2016 Honda Fit Hybrid



**Purchase Price** **\$14,980**

Includes GST  
Excludes on-road costs of \$695

Finance may be available on this vehicle. Ask one of our friendly staff for more information.



Gain peace of mind with Mechanical Breakdown Insurance. **Ask us how.**



**Top features**

- » ABS
- » Air Conditioning
- » Auto headlight
- » Bluetooth
- » Central Locking
- » Central Locking
- » Central Locking
- » Child seat anchor poin...
- » Climate Control
- » Eco Mode
- » Electric Mirror
- » Electric Mirrors
- » heated rear window
- » Heated Seats
- » HYBRID SYNERGY DRIVE
- » Inside rear view mirro...
- » Keyless entry
- » Multi-function steerin...

Body Style  
**4 door, Hatchback**

Odometer  
**72,500 km**

Engine  
**1490 cc, Hybrid**

Fuel Type  
**Hybrid**

Transmission  
**Automatic, Front Wheel**

Wheels  
**15", Hubcap**

VIN  
**7AT08G2YX24224990**

Interior  
**Black, Plastic**

Safety



Based on 2023 UCSR rating for 14-20 models

Reg No.

-

Ext Colour

**Pink**

History

**Ex-Overseas**

Seats

**5 seats, Cloth**

CO2 Emissions

★★★★☆

**92 grams/km**

Energy Economy

★★★★☆☆

**Annual fuel cost of \$1,530**

**3.9L per 100km**

Cost per year is an estimate based on petrol price of \$2.80 per litre and an average distance of 14000 km. Emissions and Energy Economy figures standardised to 3P WLTP.

**Stock ID: 21869**



AJ Motors Sockburn | Phone 0800 566 789 | Email sockburn@ajmotors.co.nz  
466 Blenheim Road, Sockburn, Christchurch 8042, New Zealand  
www.ajmotors.co.nz