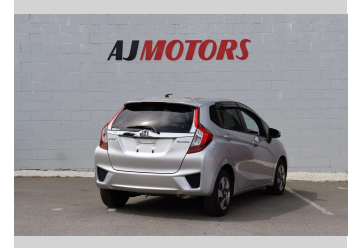
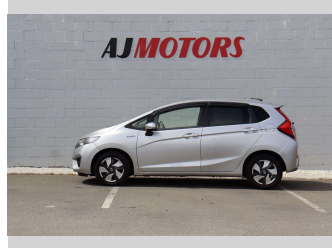


# 2013 Honda Fit Hybrid




**Purchase Price** **\$11,980**

Includes GST  
Excludes on-road costs of \$695

Finance may be available on this vehicle. Ask one of our friendly staff for more information.



Gain peace of mind with Mechanical Breakdown Insurance. **Ask us how.**



**Top features**

- » ABS
- » Auto air-condition
- » Bluetooth
- » Central Locking
- » Child seat anchor poin...
- » Climate Control
- » Eco Mode
- » Push button start
- » Rear Wiper
- » Reversing Camera
- » Smart key system with...
- » Traction control

Body Style  
**4 door, Hatchback**

Odometer  
**64,300 km**

Engine  
**1500 cc, Hybrid**

Fuel Type  
**Hybrid**

Transmission  
**Automatic, 2WD**

Wheels  
**15", Hubcap**

VIN  
**7AT08G2YX24010622**

Interior  
**beige and black, Plastic**

Safety



Based on 2023 UCSR rating for 14-20 models

Reg No.  
-

Ext Colour  
**Silver**

History  
**Ex-Overseas**

Seats  
**5 seats, Cloth**

CO2 Emissions  
**★★★★☆**  
**92 grams/km**

Energy Economy  
**★★★★☆**

**Annual fuel cost of \$1,530**  
**3.9L per 100km**

Cost per year is an estimate based on petrol price of \$2.80 per litre and an average distance of 14000 km. Emissions and Energy Economy figures standardised to 3P WLTP.

**Stock ID: 23514**



AJ Motors Sockburn | Phone 0800 566 789 | Email sockburn@ajmotors.co.nz  
466 Blenheim Road, Sockburn, Christchurch 8042, New Zealand  
www.ajmotors.co.nz