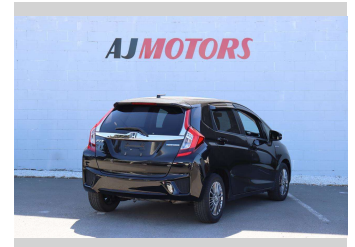
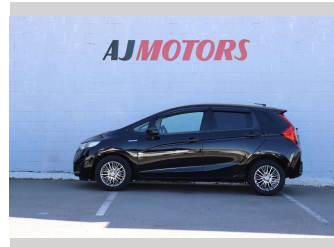
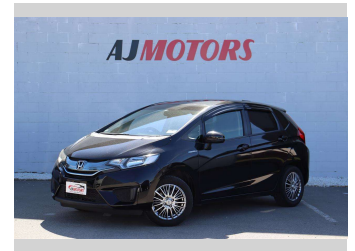
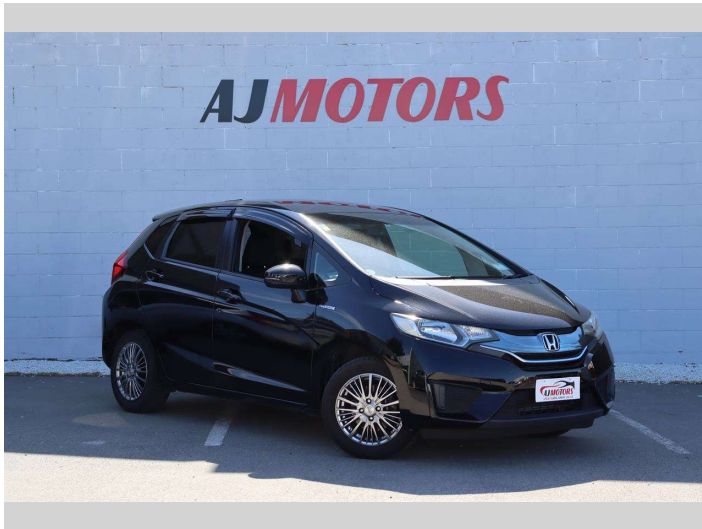


2015 Honda Fit HYBRID F PACKAGE



Purchase Price

\$9,980

Includes GST
Excludes on-road costs of \$695

Finance may be available on this vehicle. Ask one of our friendly staff for more information.

finance
NOW

Gain peace of mind with Mechanical Breakdown Insurance. **Ask us how.**

autosure
INSURANCE

Top features

- » ABS
- » Air Conditioning
- » Alloy Wheels
- » Auto air-condition
- » Eco Mode
- » Inside rear view mirror
- » Power window
- » Push button start
- » Rear Wiper
- » Side Skirts
- » Smart key system with...

Body Style

4 door, Hatchback

Odometer

117,700 km

Engine

1500 cc, Hybrid

Fuel Type

Hybrid

Transmission

Automatic

Wheels

15", Custom Alloys

VIN

7AT08G2YX24006878

Interior

Black, Plastic

Safety



Based on 2024 UCSR rating for 14-20 models

Reg No.

-

Ext Colour

Black

History

Ex-Overseas

Seats

5 seats, Cloth

CO2 Emissions

★★★★☆

92 grams/km

Energy Economy

★★★★☆

Annual fuel cost of \$1,530

3.9L per 100km

Cost per year is an estimate based on petrol price of \$2.80 per litre and an average distance of 14000 km. Emissions and Energy Economy figures standardised to 3P WLTP.

Stock ID: 23546



AJ Motors Sockburn | Phone 0800 566 789 | Email sockburn@ajmotors.co.nz
466 Blenheim Road, Sockburn, Christchurch 8042, New Zealand
www.ajmotors.co.nz