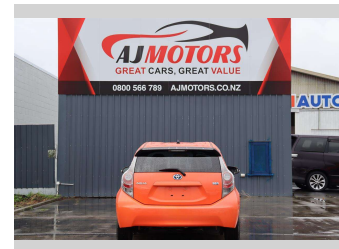
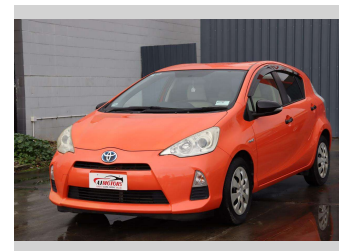
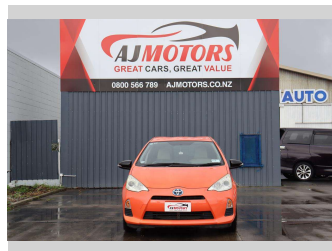



2012 Toyota Aqua S Push button




Purchase Price **\$9,488**

Includes GST
Excludes on-road costs of \$695

Finance may be available on this vehicle. Ask one of our friendly staff for more information.



Gain peace of mind with Mechanical Breakdown Insurance. **Ask us how.**



Top features

- » ABS
- » Air Conditioning
- » Auto headlight
- » Bluetooth
- » Central Locking
- » Central Locking
- » Child seat anchor poin...
- » Eco Mode
- » Electric Mirrors
- » EV mode
- » Inside rear view mirro...
- » Keyless entry
- » Power window
- » Push button start
- » Rear Wiper
- » Side Skirts
- » Smart key system with...

Body Style
5 door, Hatchback

Odometer
129,900 km

Engine
1500 cc, Hybrid

Fuel Type
Hybrid

Transmission
Automatic

Wheels
15", Hubcap

VIN
7AT0H65YX24017264

Interior
Beige, Plastic

Safety



Based on 2023 UCSR rating for 12-20 models

Reg No.
-

Ext Colour
Orange

History
Ex-Overseas

Seats
5 seats, Cloth

CO2 Emissions
★★★★☆
86 grams/km

Energy Economy
★★★★☆

Annual fuel cost of \$1,410
3.6L per 100km

Cost per year is an estimate based on petrol price of \$2.80 per litre and an average distance of 14000 km. Emissions and Energy Economy figures standardised to 3P WLTP.

Stock ID: 19957



AJ Motors Sockburn | Phone 0800 566 789 | Email sockburn@ajmotors.co.nz
466 Blenheim Road, Sockburn, Christchurch 8042, New Zealand
www.ajmotors.co.nz