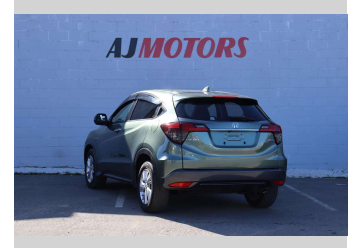
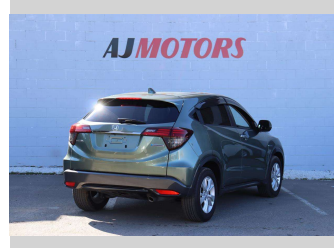



# 2018 Honda Vezel Hybrid X Cruise control




**Purchase Price** **\$23,980**  
Includes GST  
 Excludes on-road costs of \$695

Finance may be available on this vehicle. Ask one of our friendly staff for more information.



Gain peace of mind with Mechanical Breakdown Insurance. **Ask us how.**



- Top features**
- » ABS
  - » Adaptive Cruise Control
  - » Air Conditioning
  - » Alloy Wheels
  - » Auto air-condition
  - » Auto headlight
  - » Auto Hold
  - » Bluetooth
  - » Central Locking
  - » Central Locking
  - » Central Locking
  - » Child seat anchor point
  - » Climate Control
  - » Cruise control
  - » Cruise Control
  - » Daytime running light
  - » Dual air-condition
  - » Eco Mode

**Body Style**  
4 door, RV/SUV

**Odometer**  
84,000 km

**Engine**  
1500 cc, Hybrid

**Fuel Type**  
Hybrid


**Transmission**  
Automatic, 2WD

**Wheels**  
16", Factory Alloys

**VIN**  
7AT08GDHX24320104

**Interior**  
Black, Plastic

**Safety**



Based on 2023 VSRR rating

**Reg No.**  
-

**Ext Colour**  
Green

**History**  
Ex-Overseas

**Seats**  
5 seats, Cloth

**CO2 Emissions**  
★★★★☆  
111 grams/km

**Energy Economy**  
★★★★☆☆  
Annual fuel cost of \$1,840  
4.7L per 100km

Cost per year is an estimate based on petrol price of \$2.80 per litre and an average distance of 14000 km. Emissions and Energy Economy figures standardised to 3P WLTP.

**Stock ID: 22435**



AJ Motors Sockburn | Phone 0800 566 789 | Email sockburn@ajmotors.co.nz  
 466 Blenheim Road, Sockburn, Christchurch 8042, New Zealand  
 www.ajmotors.co.nz