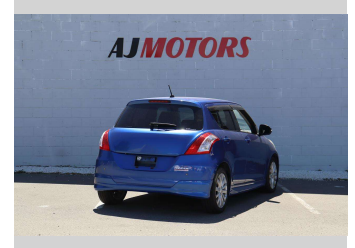



# 2011 Suzuki Swift 1.2L



**Purchase Price** **\$7,980**

Includes GST  
Excludes on-road costs of \$295

Finance may be available on this vehicle. Ask one of our friendly staff for more information.



Gain peace of mind with Mechanical Breakdown Insurance. **Ask us how.**



**Top features**

- » ABS
- » Auto air-condition
- » Auto headlight
- » Central Locking
- » Cruise control
- » Fog Lights
- » Push button start
- » Rear Wiper
- » Reversing Camera
- » Smart key system with...
- » Traction control

Body Style  
**4 door, Hatchback**

Odometer  
**136,400 km**

Engine  
**1240 cc, Internal Combustion**

Fuel Type  
**Petrol**

Transmission  
**Automatic, 2WD**

Wheels  
**16", Factory Alloys**

VIN  
**7AT0GK0CX20124562**

Interior  
**Black**

Safety



Based on 2024 UCSR rating for 11-17 models

Reg No.  
**NFC437**

Ext Colour  
**Blue**

History  
**Ex-Overseas**

Seats  
**5 seats**

CO2 Emissions  
**★★★★☆**  
**139 grams/km**

Energy Economy  
**★★★★☆☆**

**Annual fuel cost of \$2,270**  
**5.8L per 100km**

Cost per year is an estimate based on petrol price of \$2.80 per litre and an average distance of 14000 km. Emissions and Energy Economy figures standardised to 3P WLTP.

**Stock ID: 24418**



AJ Motors Sockburn | Phone 0800 566 789 | Email sockburn@ajmotors.co.nz  
466 Blenheim Road, Sockburn, Christchurch 8042, New Zealand  
www.ajmotors.co.nz