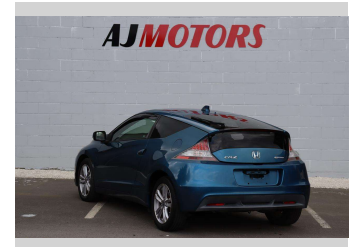
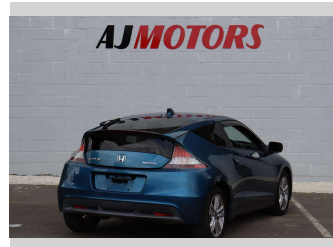
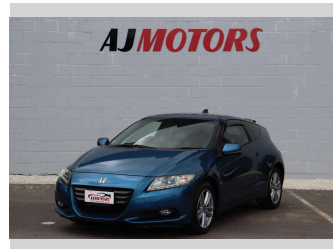



# 2011 Honda CR-Z ALPHA MANUAL



**Purchase Price** **\$9,980**

Includes GST  
Excludes on-road costs of \$295

Finance may be available on this vehicle. Ask one of our friendly staff for more information.



Gain peace of mind with Mechanical Breakdown Insurance. **Ask us how.**



**Top features**

- » Air Conditioning
- » Alloy Wheels
- » Auto air-condition
- » Auto Fold Mirrors
- » Auto Start Stop
- » Central Locking
- » Child seat anchor poin...
- » Cruise control
- » Eco Mode
- » EV mode
- » Fog Lights
- » Keyless entry
- » Multi-function steerin...
- » PWR Mode
- » Rear Wiper
- » Reversing Camera
- » Spoiler

Body Style  
**2 door, Hatchback**

Odometer  
**118,300 km**

Engine  
**1500 cc, Hybrid**

Fuel Type  
**Hybrid**

Transmission  
**Manual, Front Wheel**

Wheels  
**16", Factory Alloys**

VIN  
**7AT08GCLX23100869**

Interior  
**Grey, Plastic**

Safety



Based on 2023 VSRR rating

Reg No.  
**QPL887**

Ext Colour  
**Blue**

History  
**-**

Seats  
**5 seats, Cloth**

CO2 Emissions  
**★★★★☆**  
**139 grams/km**

Energy Economy  
**★★★★☆☆**

**Annual fuel cost of \$2,270**  
**5.8L per 100km**

Cost per year is an estimate based on petrol price of \$2.80 per litre and an average distance of 14000 km. Emissions and Energy Economy figures standardised to 3P WLTP.

**Stock ID: 22738**



AJ Motors Sockburn | Phone 0800 566 789 | Email sockburn@ajmotors.co.nz  
466 Blenheim Road, Sockburn, Christchurch 8042, New Zealand  
www.ajmotors.co.nz