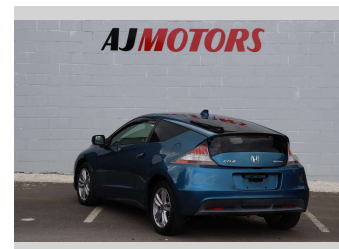
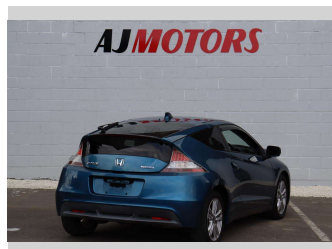
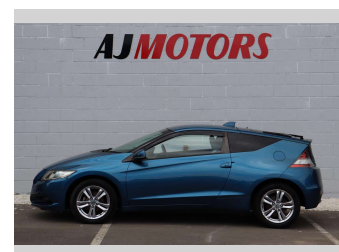
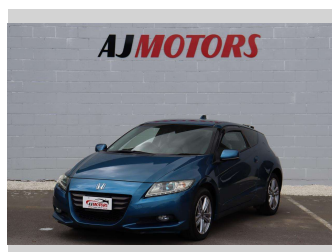



2011 Honda CR-Z ALPHA MANUAL




Purchase Price **\$9,488**

Includes GST
Excludes on-road costs of \$295

Finance may be available on this vehicle. Ask one of our friendly staff for more information.



Gain peace of mind with Mechanical Breakdown Insurance. **Ask us how.**



Top features

- » Air Conditioning
- » Alloy Wheels
- » Auto air-condition
- » Auto Fold Mirrors
- » Auto Start Stop
- » Central Locking
- » Child seat anchor poin...
- » Cruise control
- » Eco Mode
- » EV mode
- » Fog Lights
- » Keyless entry
- » Multi-function steerin...
- » PWR Mode
- » Rear Wiper
- » Reversing Camera
- » Spoiler

Body Style
2 door, Hatchback

Odometer
118,300 km

Engine
1500 cc, Hybrid

Fuel Type
Hybrid

Transmission
Manual, Front Wheel

Wheels
16", Factory Alloys

VIN
7AT08GCLX23100869

Interior
Grey, Plastic

Safety



Based on 2023 VSRR rating

Reg No.
QPL887

Ext Colour
Blue

History
-

Seats
5 seats, Cloth

CO2 Emissions
★★★★☆
139 grams/km

Energy Economy
★★★★☆☆

Annual fuel cost of \$2,270
5.8L per 100km

Cost per year is an estimate based on petrol price of \$2.80 per litre and an average distance of 14000 km. Emissions and Energy Economy figures standardised to 3P WLTP.

Stock ID: 22738



AJ Motors Sockburn | Phone 0800 566 789 | Email sockburn@ajmotors.co.nz
466 Blenheim Road, Sockburn, Christchurch 8042, New Zealand
www.ajmotors.co.nz