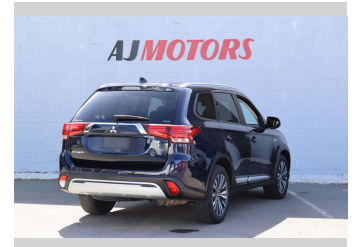


# 2019 Mitsubishi Outlander LS 2.4P/4WD 7seater



Purchase Price

**\$23,980**

Includes GST  
Excludes on-road costs of \$295

Finance may be available on this vehicle. Ask one of our friendly staff for more information.

finance  
**NOW**

Gain peace of mind with Mechanical Breakdown Insurance. **Ask us how.**

**autosure**  
INSURANCE

## Top features

- » ABS
- » Adaptive Cruise Control...
- » Air Conditioning
- » Alloy Wheels
- » Auto Hold
- » Bluetooth
- » Central Locking
- » Child seat anchor poin...
- » Dynamic Chassis Contro...
- » Eco Mode
- » Electronic Hand Brake
- » Fog Lights
- » Inside rear view mirro...
- » Multi-function steerin...
- » Power window
- » Push button start
- » Reversing Camera
- » Smart key system with...

Body Style

**4 door, RV/SUV**

Odometer

**111,900 km**

Engine

**2360 cc, Internal Combustion**

Fuel Type

**Petrol**

Transmission

**Automatic**

Wheels

**18", Factory Alloys**

VIN

**JMFXTGF8WLJ001291**

Interior

**Black, Plastic**

Safety



Based on 2023 UCSR rating for 12-21 models

Reg No.

**MJJ946**

Ext Colour

**Dark Blue**

History

**NZ New**

Seats

**7 seats, Cloth**

CO2 Emissions

★★★★☆

**186 grams/km**

Energy Economy

★★☆☆☆☆

**Annual fuel cost of \$3,140**

**8L per 100km**

Cost per year is an estimate based on petrol price of \$2.80 per litre and an average distance of 14000 km. Emissions and Energy Economy figures standardised to 3P WLTP.

**Stock ID: 23272**



AJ Motors Sockburn | Phone 0800 566 789 | Email sockburn@ajmotors.co.nz  
466 Blenheim Road, Sockburn, Christchurch 8042, New Zealand  
www.ajmotors.co.nz