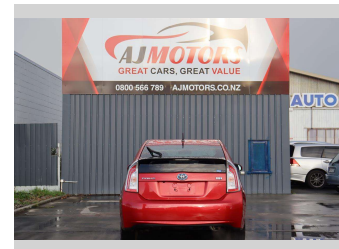
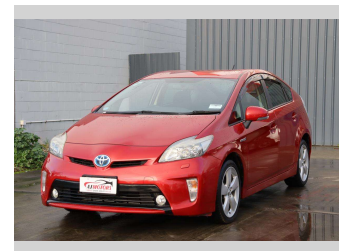
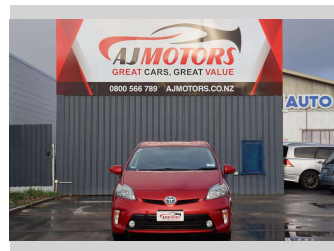



# 2013 Toyota Prius Hybrid




**Purchase Price** **\$10,487**

Includes GST  
Excludes on-road costs of \$695

Finance may be available on this vehicle. Ask one of our friendly staff for more information.



Gain peace of mind with Mechanical Breakdown Insurance. **Ask us how.**



**Top features**

- » ABS
- » Air Conditioning
- » All auto windows
- » Alloy Wheels
- » Auto air-condition
- » Auto headlight
- » Central Locking
- » Central Locking
- » Child seat anchor poin...
- » Dynamic Chassis Contro...
- » Electric Mirrors
- » EV mode
- » Fog Lights
- » Inside rear view mirro...
- » Keyless entry
- » Multi-function steerin...
- » Push button start
- » Rear Wiper

**Body Style**  
4 door, Hatchback

**Odometer**  
113,700 km

**Engine**  
1797 cc, Hybrid

**Fuel Type**  
Hybrid


**Transmission**  
Automatic

**Wheels**  
17", Factory Alloys

**VIN**  
7AT0H637X23734462

**Interior**  
Black, Plastic

**Safety**



Based on 2023 UCSR rating for 09-16 models

**Reg No.**  
-

**Ext Colour**  
Red

**History**  
Ex-Overseas

**Seats**  
5 seats, Cloth

**CO2 Emissions**  
★★★★☆  
98 grams/km

**Energy Economy**  
★★★★☆  
Annual fuel cost of \$1,650  
4.2L per 100km

Cost per year is an estimate based on petrol price of \$2.80 per litre and an average distance of 14000 km. Emissions and Energy Economy figures standardised to 3P WLTP.

**Stock ID: 21196**



AJ Motors Sockburn | Phone 0800 566 789 | Email sockburn@ajmotors.co.nz  
466 Blenheim Road, Sockburn, Christchurch 8042, New Zealand  
www.ajmotors.co.nz