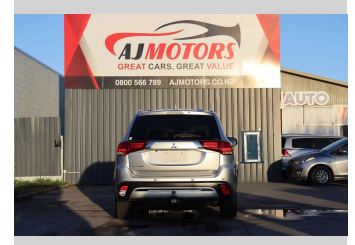
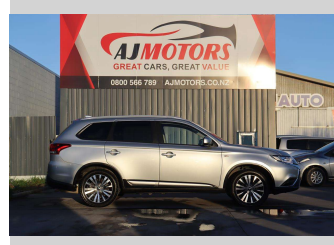
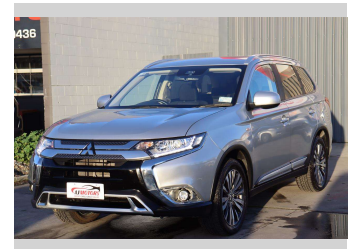
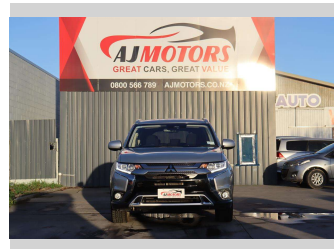



2020 Mitsubishi Outlander 2.4 4WD




Purchase Price **\$24,980**

Includes GST
Excludes on-road costs of \$295

Finance may be available on this vehicle. Ask one of our friendly staff for more information.



Gain peace of mind with Mechanical Breakdown Insurance. **Ask us how.**



Top features

- » 4WD
- » ABS
- » Adaptive Cruise Control
- » Air Conditioning
- » Alloy Wheels
- » Auto air-condition
- » Auto headlight
- » Auto Hold
- » Bluetooth
- » Central Locking
- » Central Locking
- » Central Locking
- » Child seat anchor point
- » Climate Control
- » Cruise control
- » Cruise Control
- » Daytime running light
- » Dual air-condition

Body Style
4 door, RV/SUV

Odometer
94,200 km

Engine
2360 cc, Internal Combustion

Fuel Type
Petrol


Transmission
Automatic, 4WD

Wheels
18", Factory Alloys

VIN
JMFXTGF8WLZ011112

Interior
Black, Plastic

Safety



Based on 2023 UCSR rating for 12-21 models

Reg No.
NAT725

Ext Colour
Silver

History
Ex-Overseas

Seats
7 seats, Cloth

CO2 Emissions
★★★★☆
186 grams/km

Energy Economy
★★☆☆☆☆

Annual fuel cost of \$3,140
8L per 100km

Cost per year is an estimate based on petrol price of \$2.80 per litre and an average distance of 14000 km. Emissions and Energy Economy figures standardised to 3P WLTP.

Stock ID: 21985



AJ Motors Sockburn | Phone 0800 566 789 | Email sockburn@ajmotors.co.nz
466 Blenheim Road, Sockburn, Christchurch 8042, New Zealand
www.ajmotors.co.nz