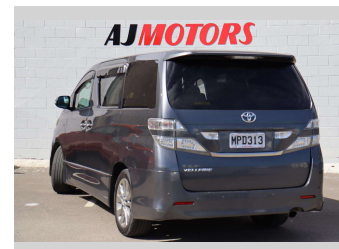



2010 Toyota Alphard 240S



Purchase Price **\$14,988**
Includes GST
Excludes on-road costs of \$295

Finance may be available on this vehicle. Ask one of our friendly staff for more information.



Gain peace of mind with Mechanical Breakdown Insurance. **Ask us how.**



- Top features**
- » Alloy Wheels
 - » Auto air-condition
 - » Auto headlight
 - » AUX in
 - » Bluetooth
 - » Dual air-condition
 - » Electric Mirrors
 - » Fog Lights
 - » Keyless entry
 - » Multi-function steerin...
 - » Parking Sensors
 - » Power Tailgate
 - » Push button start
 - » Reversing Camera
 - » Spoiler

Body Style
4 door, Van

Odometer
152,000 km

Engine
2362 cc, Internal Combustion

Fuel Type
Petrol

Transmission
automatic, Front Wheel

Wheels
18", Factory Alloys

VIN
7AT0H65MX19139616

Interior
Black and Brown, Plastic

Safety



Based on 2023 VSRR rating

Reg No.
MPD313

Ext Colour
Silver

History
Ex-Overseas

Seats
6 seats, Cloth

CO2 Emissions
★ ★ ★ ☆ ☆ ☆
233 grams/km

Energy Economy
★ ☆ ☆ ☆ ☆ ☆

Annual fuel cost of \$3,920
10L per 100km

Cost per year is an estimate based on petrol price of \$2.80 per litre and an average distance of 14000 km. Emissions and Energy Economy figures standardised to 3P WLTP.

Stock ID: 17268



AJ Motors Sockburn | Phone 0800 566 789 | Email sockburn@ajmotors.co.nz
466 Blenheim Road, Sockburn, Christchurch 8042, New Zealand
www.ajmotors.co.nz