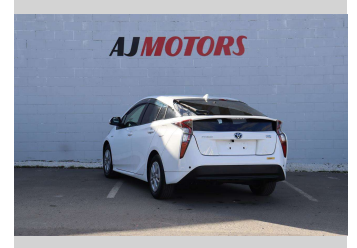
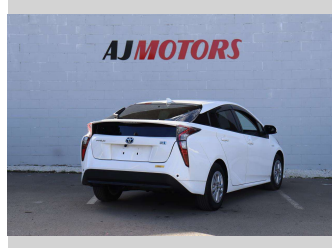
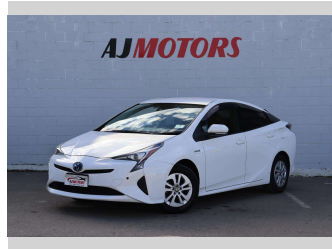


# 2018 Toyota Prius S



**Purchase Price** **\$15,487**

Includes GST  
Excludes on-road costs of \$695

Finance may be available on this vehicle. Ask one of our friendly staff for more information.



Gain peace of mind with Mechanical Breakdown Insurance. **Ask us how.**



**Top features**

- » ABS
- » All auto windows
- » Alloy Wheels
- » Auto air-condition
- » Auto headlight
- » Central Locking
- » Central Locking
- » Child seat anchor poin...
- » Cruise control
- » Dynamic Chassis Contro...
- » Electric Mirrors
- » EV mode
- » Inside rear view mirro...
- » Keyless entry
- » Multi-function steerin...
- » Power window
- » Push button start
- » Rear Wiper

Body Style  
**4 door, Hatchback**

Odometer  
**115,900 km**

Engine  
**1797 cc, Hybrid**

Fuel Type  
**Hybrid**

Transmission  
**Automatic**

Wheels  
**15", Factory Alloys**

VIN  
**7AT0H637X24130682**

Interior  
**Black, Plastic**

Safety



Based on 2024 VSRR rating

Reg No.

-

Ext Colour  
**White**

History  
**Ex-Overseas**

Seats  
**5 seats, Cloth**

CO2 Emissions  
**★★★★☆**  
**85 grams/km**

Energy Economy  
**★★★★☆**

**Annual fuel cost of \$1,410**  
**3.6L per 100km**

Cost per year is an estimate based on petrol price of \$2.80 per litre and an average distance of 14000 km. Emissions and Energy Economy figures standardised to 3P WLTP.

**Stock ID: 21662**



AJ Motors Sockburn | Phone 0800 566 789 | Email sockburn@ajmotors.co.nz  
393 Ferry Road, Woolston, Christchurch 8023, New Zealand  
www.ajmotors.co.nz