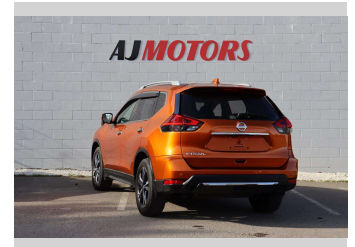
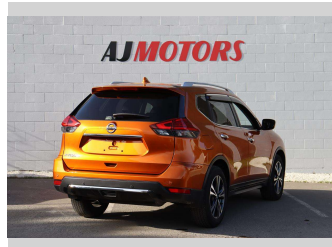
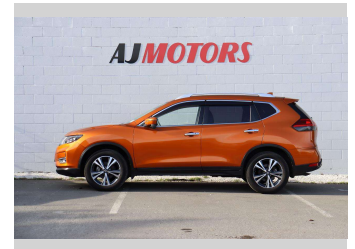



2017 Nissan X-Trail 2.0 4WD



Purchase Price **\$24,988**
Includes GST
 Excludes on-road costs of \$695

Finance may be available on this vehicle. Ask one of our friendly staff for more information.



Gain peace of mind with Mechanical Breakdown Insurance. **Ask us how.**



- Top features**
- » 4WD
 - » ABS
 - » Adaptive Cruise Contro...
 - » Air Conditioning
 - » Alloy Wheels
 - » Auto air-condition
 - » Auto headlight
 - » Auto Hold
 - » Auto Start Stop
 - » Bluetooth
 - » Central Locking
 - » Central Locking
 - » Central Locking
 - » Child seat anchor poin...
 - » Climate Control
 - » Cruise control
 - » Cruise Control
 - » Downhill Assist Contro...

Body Style
4 door, RV/SUV

Odometer
42,500 km

Engine
2000 cc, Internal Combustion

Fuel Type
Petrol

Transmission
Automatic, 4WD

Wheels
18", Factory Alloys

VIN
7AT0DH6LX24072021

Interior
Black, Plastic

Safety



Based on 2023 UCSR rating for 14-21 models

Reg No.
 -

Ext Colour
Orange

History
Ex-Overseas

Seats
5 seats, Leather

CO2 Emissions
 ★★★★★☆
169 grams/km

Energy Economy
 ★★☆☆☆☆

Annual fuel cost of \$2,820
7.2L per 100km

Cost per year is an estimate based on petrol price of \$2.80 per litre and an average distance of 14000 km. Emissions and Energy Economy figures standardised to 3P WLTP.

Stock ID: 22384



AJ Motors Sockburn | Phone 0800 566 789 | Email sockburn@ajmotors.co.nz
 466 Blenheim Road, Sockburn, Christchurch 8042, New Zealand
 www.ajmotors.co.nz