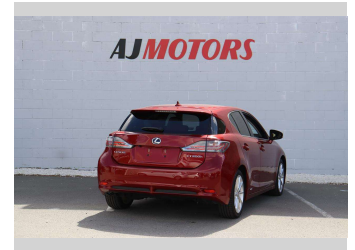



2012 Lexus CT 200h Hybrid Leather Seat




Purchase Price **\$14,980**

Includes GST
Excludes on-road costs of \$695

Finance may be available on this vehicle. Ask one of our friendly staff for more information.



Gain peace of mind with Mechanical Breakdown Insurance. **Ask us how.**



Top features

- » ABS
- » Auto air-condition
- » Auto headlight
- » Central Locking
- » Cruise control
- » Eco Mode
- » electric seats
- » EV mode
- » Fog Lights
- » Heated Seats
- » Parking Sensors
- » Push button start
- » Rain-sensing Wipers
- » Reversing Camera
- » Smart key system with...
- » Sport mode
- » Traction control

Body Style
4 door, Hatchback

Odometer
88,900 km

Engine
1800 cc, Hybrid

Fuel Type
Hybrid

Transmission
Automatic, 2WD

Wheels
17", Factory Alloys

VIN
7AT0B010X24118638

Interior
black and beige

Safety



Based on 2024 VSRR rating

Reg No.

-

Ext Colour
Red

History
Ex-Overseas

Seats
5 seats

CO2 Emissions
★★★★☆
109 grams/km

Energy Economy
★★★★☆☆

Annual fuel cost of \$1,840
4.7L per 100km

Cost per year is an estimate based on petrol price of \$2.80 per litre and an average distance of 14000 km. Emissions and Energy Economy figures standardised to 3P WLTP.

Stock ID: 23435



AJ Motors Sockburn | Phone 0800 566 789 | Email sockburn@ajmotors.co.nz
466 Blenheim Road, Sockburn, Christchurch 8042, New Zealand
www.ajmotors.co.nz