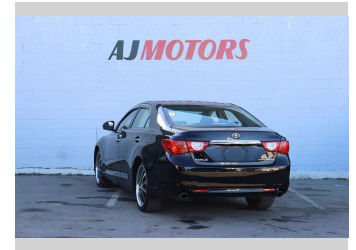
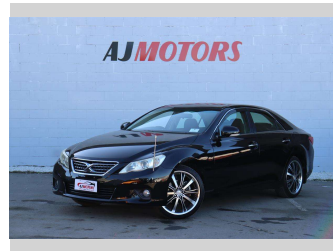



# 2011 Toyota MARKX 250G



**Purchase Price** **\$11,980**

Includes GST  
Excludes on-road costs of \$695

Finance may be available on this vehicle. Ask one of our friendly staff for more information.



Gain peace of mind with Mechanical Breakdown Insurance. **Ask us how.**



**Top features**

- » ABS
- » Air Conditioning
- » All auto windows
- » Alloy Wheels
- » Auto air-condition
- » Auto headlight
- » Bluetooth
- » Central Locking
- » Central Locking
- » Child seat anchor poin...
- » Dynamic Chassis Contro...
- » Eco Mode
- » Fog Lights
- » Inside rear view mirro...
- » Keyless entry
- » Multi-function steerin...
- » Power Seat Adjustment
- » Power window

Body Style  
**4 door, Sedan**

Odometer  
**108,700 km**

Engine  
**2500 cc, Internal Combustion**

Fuel Type  
**Petrol**

Transmission  
**Automatic**

Wheels  
**19", Custom Alloys**

VIN  
**7AT0H64TX24047674**

Interior  
**Black**

Safety



Based on 2023 VSRR rating

Reg No.  
-

Ext Colour  
**Black**

History  
**Ex-Overseas**

Seats  
**5 seats**

CO2 Emissions  
★ ★ ★ ☆ ☆ ☆  
**216 grams/km**

Energy Economy  
★ ☆ ☆ ☆ ☆ ☆

**Annual fuel cost of \$3,650  
9.3L per 100km**

Cost per year is an estimate based on petrol price of \$2.80 per litre and an average distance of 14000 km. Emissions and Energy Economy figures standardised to 3P WLTP.

**Stock ID: 21689**



AJ Motors Sockburn | Phone 0800 566 789 | Email sockburn@ajmotors.co.nz  
466 Blenheim Road, Sockburn, Christchurch 8042, New Zealand  
www.ajmotors.co.nz