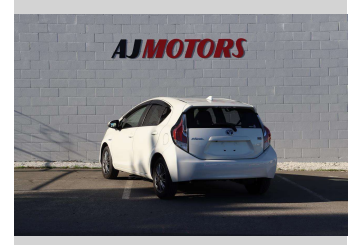
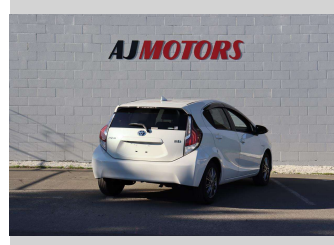
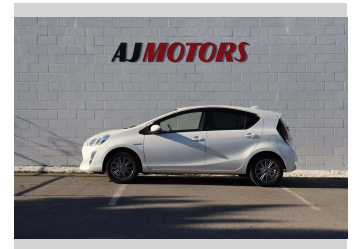
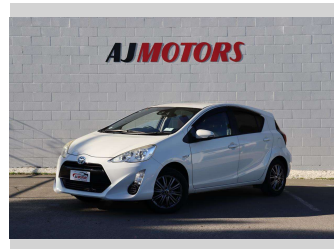
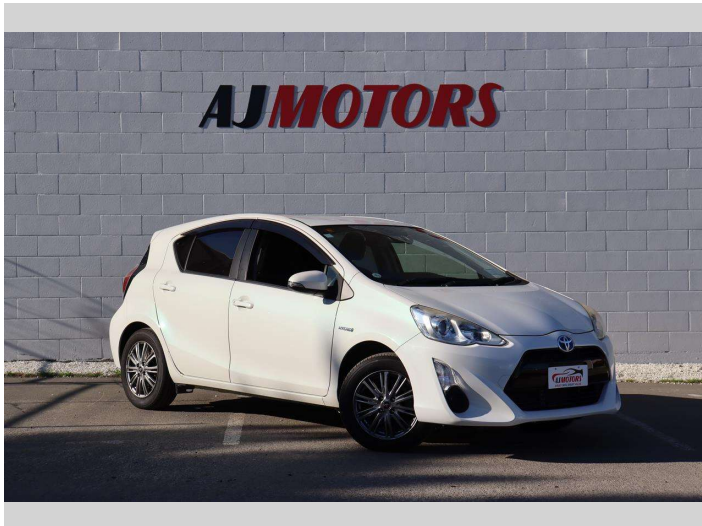


2017 Toyota Aqua Hybrid Push button/Cruise control



Purchase Price **\$14,980**

Includes GST
Excludes on-road costs of \$695

Finance may be available on this vehicle. Ask one of our friendly staff for more information.



Gain peace of mind with Mechanical Breakdown Insurance. **Ask us how.**



Top features

- » ABS
- » Air Conditioning
- » Auto air-condition
- » Auto headlight
- » Auto High Beam
- » Bluetooth
- » Central Locking
- » Central Locking
- » Central Locking
- » Child seat anchor poin...
- » Climate Control
- » Cruise control
- » Cruise Control
- » Eco Mode
- » Electric Mirror
- » Electric Mirrors (Retr...
- » EV mode
- » Forward Collision Miti...

Body Style
5 door, Hatchback

Odometer
95,200 km

Engine
1500 cc, Hybrid

Fuel Type
Hybrid


Transmission
Automatic, 2WD

Wheels
15", Custom Alloys

VIN
7AT0H65YX24575733

Interior
Black, Plastic

Safety



Based on 2023 UCSR rating for 12-20 models

Reg No.
-

Ext Colour
pearl

History
Ex-Overseas

Seats
5 seats, Cloth

CO2 Emissions
★★★★☆
92 grams/km

Energy Economy
★★★★☆
Annual fuel cost of \$1,530
3.9L per 100km

Cost per year is an estimate based on petrol price of \$2.80 per litre and an average distance of 14000 km. Emissions and Energy Economy figures standardised to 3P WLTP.

Stock ID: 21938



AJ Motors Sockburn | Phone 0800 566 789 | Email sockburn@ajmotors.co.nz
466 Blenheim Road, Sockburn, Christchurch 8042, New Zealand
www.ajmotors.co.nz