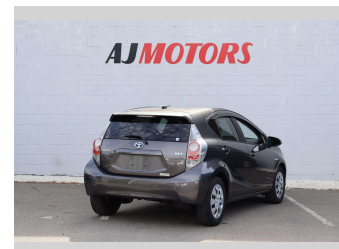
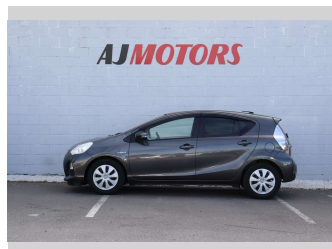
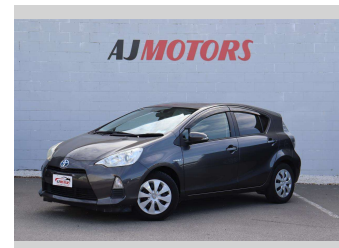
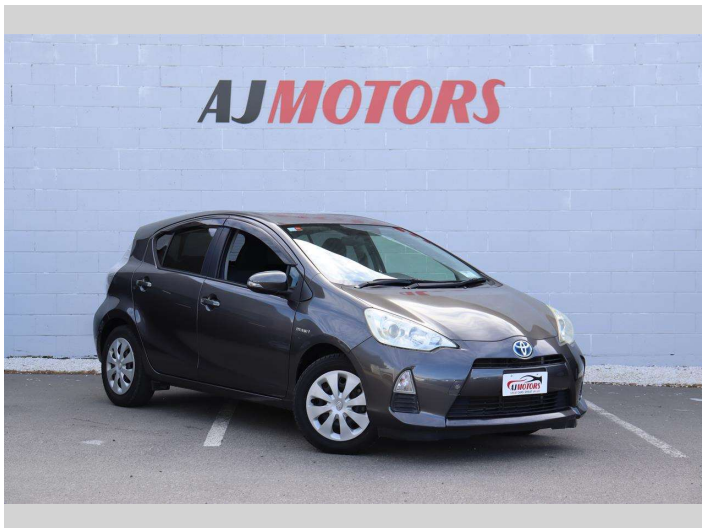


# 2012 Toyota Aqua 1.5 push start button



Purchase Price

**POA**

Includes GST, Registration & Licensing

Finance may be available on this vehicle. Ask one of our friendly staff for more information.

finance  
**NOW**

Gain peace of mind with Mechanical Breakdown Insurance. **Ask us how.**

**autosure**  
INSURANCE

## Top features

- » ABS
- » Auto air-condition
- » Auto headlight
- » Central Locking
- » Child seat anchor poin...
- » Climate Control
- » Eco Mode
- » Electric Mirrors (Retr...
- » EV mode
- » Push button start
- » Rear Wiper
- » Reversing Camera
- » Smart key system with...

Body Style

**4 door, Hatchback**

Odometer

**118,400 km**

Engine

**1500 cc, Hybrid**

Fuel Type

**Hybrid**

Transmission

**Automatic, 2WD**

Wheels

**15", Hubcap**

VIN

**7AT0H65YX24002581**

Interior

**Black, Plastic**

Safety



Based on 2023 UCSR rating for 12-20 models

Reg No.

-

Ext Colour

**GRAY**

History

**Ex-Overseas**

Seats

**5 seats, Cloth**

CO2 Emissions

★★★★☆

**86 grams/km**

Energy Economy

★★★★☆

**Annual fuel cost of \$1,410  
3.6L per 100km**

Cost per year is an estimate based on petrol price of \$2.80 per litre and an average distance of 14000 km. Emissions and Energy Economy figures standardised to 3P WLTP.

**Stock ID: 23240**



AJ Motors Christchurch | Phone 0800 566 789 | Email christchurch@ajmotors.co.nz  
207 Main South Road, Hornby, Christchurch 8042, New Zealand  
www.ajmotors.co.nz