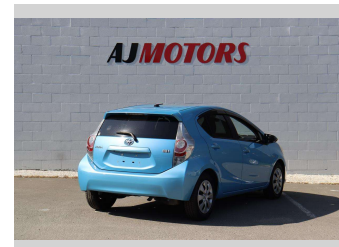
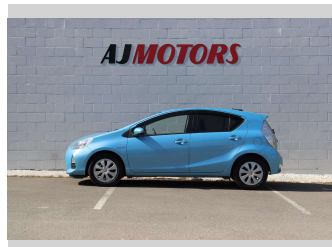
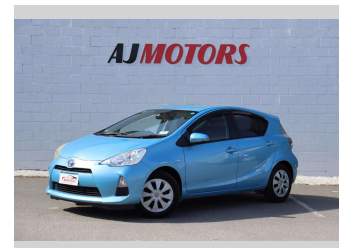
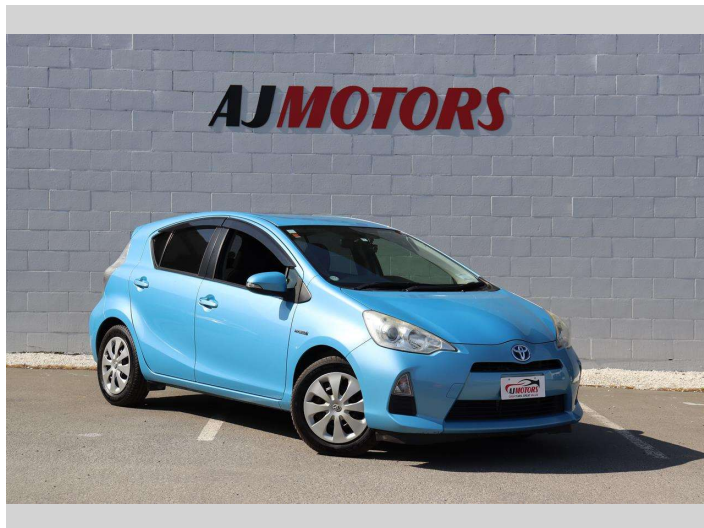


2012 Toyota Aqua G PUSH START



Purchase Price

\$9,980

Includes GST
Excludes on-road costs of \$695

Finance may be available on this vehicle. Ask one of our friendly staff for more information.

finance
NOW

Gain peace of mind with Mechanical Breakdown Insurance. **Ask us how.**

 **autosure**
INSURANCE

Top features

- » ABS
- » Air Conditioning
- » Auto headlight
- » Bluetooth
- » Dynamic Chassis Control
- » Multi-function steering wheel
- » Push button start
- » Reversing Camera
- » Smart key system with front door touch sensors

Body Style

4 door, Hatchback

Odometer

104,500 km

Engine

1500 cc, Hybrid

Fuel Type

Hybrid

Transmission

Automatic

Wheels

15", Hubcap

VIN

7AT0H65YX24136843

Interior

Black, Plastic

Safety



Based on 2023 UCSR rating for 12-20 models

Reg No.

-

Ext Colour

AQUA

History

Ex-Overseas

Seats

5 seats, Cloth

CO2 Emissions

★★★★☆

92 grams/km

Energy Economy

★★★★☆☆

**Annual fuel cost of \$1,530
3.9L per 100km**

Cost per year is an estimate based on petrol price of \$2.80 per litre and an average distance of 14000 km. Emissions and Energy Economy figures standardised to 3P WLTP.

Stock ID: 23148



AJ Motors Sockburn | Phone 0800 566 789 | Email sockburn@ajmotors.co.nz
466 Blenheim Road, Sockburn, Christchurch 8042, New Zealand
www.ajmotors.co.nz