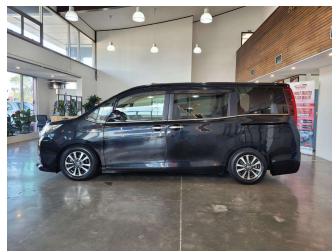
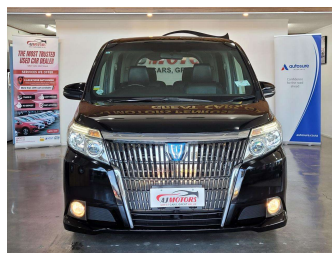


# 2014 Toyota Esquire HYBRID XI Bluetooth



**Purchase Price**

**\$19,980**

Includes GST  
Excludes on-road costs of \$695

Finance may be available on this vehicle. Ask one of our friendly staff for more information.



Gain peace of mind with Mechanical Breakdown Insurance. **Ask us how.**



**Top features**

- » ABS
- » Air Conditioning
- » Alloy Wheels
- » Auto air-condition
- » Auto Fold Mirrors
- » Bluetooth
- » Car Alarm
- » Central Locking
- » Central Locking
- » Climate Control
- » Cruise control
- » Eco Mode
- » Electric Mirrors (Retr...
- » Fog Lights
- » Headlights - LED with...
- » Keyless entry
- » Lane Departure Warning
- » Multi-function steerin...

Body Style  
**5 door, MPV**

Odometer  
**124,935 km**

Engine  
**1800 cc, Hybrid**

Fuel Type  
**Hybrid**

Transmission  
**Automatic, Front Wheel**

Wheels  
**15", Factory Alloys**

VIN  
**7AT0H664X24069990**

Interior  
**Black, Plastic**

Safety



Based on 2024 VSRR rating

Reg No.  
-

Ext Colour  
**Black**

History  
**Ex-Overseas**

Seats  
**6 seats, Leather**

CO2 Emissions  
**★★★★☆**  
**120 grams/km**

Energy Economy  
**★★★★☆☆**

**Annual fuel cost of \$2,000**  
**5.1L per 100km**

Cost per year is an estimate based on petrol price of \$2.80 per litre and an average distance of 14000 km. Emissions and Energy Economy figures standardised to 3P WLTP.

**Stock ID: 21572**



AJ Motors Wellington | Phone 0800 566 789 | Email kim@ajmotors.co.nz  
35 Annie Huggan Grove, Petone, Lower Hutt 5012, New Zealand  
www.ajmotors.co.nz