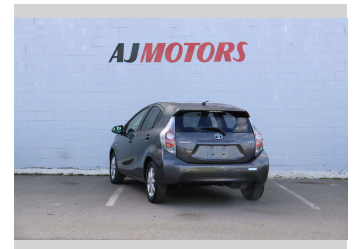
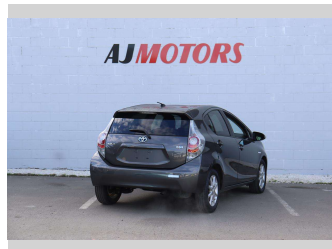
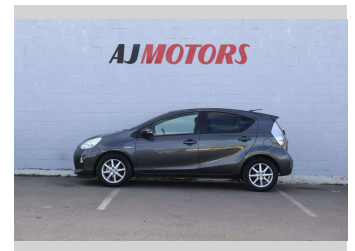



2013 Toyota Aqua G PUSH START




Purchase Price **\$9,980**
Includes GST
 Excludes on-road costs of \$695

Finance may be available on this vehicle. Ask one of our friendly staff for more information.



Gain peace of mind with Mechanical Breakdown Insurance. **Ask us how.**



- Top features**
- » ABS
 - » Air Conditioning
 - » Alloy Wheels
 - » Auto air-condition
 - » Auto headlight
 - » Blindspot Indicator
 - » Central Locking
 - » Central Locking
 - » Child seat anchor poin...
 - » Eco Mode
 - » EV mode
 - » Inside rear view mirro...
 - » Keyless entry
 - » Multi-function steerin...
 - » Power window
 - » Push button start
 - » Rear Wiper
 - » Reversing Camera

Body Style
4 door, Hatchback

Odometer
100,100 km

Engine
1500 cc, Hybrid

Fuel Type
Hybrid

Transmission
Automatic

Wheels
15", Factory Alloys

VIN
7AT0H65YX24261269

Interior
Black, Plastic

Safety



Based on 2023 UCSR rating for 12-20 models

Reg No.

-

Ext Colour
GRAY

History
Ex-Overseas

Seats
5 seats, Cloth

CO2 Emissions
★★★★☆
86 grams/km

Energy Economy
★★★★☆

Annual fuel cost of \$1,410
3.6L per 100km

Cost per year is an estimate based on petrol price of \$2.80 per litre and an average distance of 14000 km. Emissions and Energy Economy figures standardised to 3P WLTP.

Stock ID: 21330



AJ Motors Sockburn | Phone 0800 566 789 | Email sockburn@ajmotors.co.nz
 466 Blenheim Road, Sockburn, Christchurch 8042, New Zealand
 www.ajmotors.co.nz