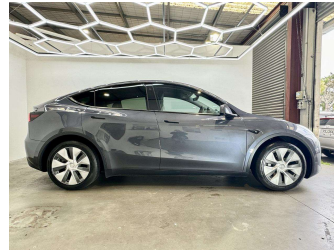



2022 Tesla Model Y NZ NEW BALANCE NEW CAR



Purchase Price **\$49,980**
Includes GST, Registration & Licensing

Indicative repayments
\$271.46 per week*
Based on a 60 month term & no deposit.
Total repayments (260) = **\$70,578.47**



Gain peace of mind with Mechanical Breakdown Insurance. **Ask us how.**



Top features

- » ABS
- » Adaptive Cruise Control
- » Alloy Wheels
- » Auto headlight
- » Auto High Beam
- » Blindspot Indicator
- » Bluetooth
- » Climate Control
- » Collision System
- » Cruise control
- » Daytime running light
- » Digital Display
- » Electric Mirrors (Retr...)
- » electric seats
- » Electronic stability c...
- » Hill Assist
- » Lane Keeping
- » Leather Seats

Body Style
5 door, RV/SUV

Odometer
25,700 km

Engine
1 cc, Electric

Fuel Type
Electric


Transmission
Automatic, Rear Wheel

Wheels
Factory Alloys

VIN
LRWYHCFS8NC442579

Interior
Black, Leather

Safety



Based on 2022 ANCAP rating for 22+ models

Reg No.
QTJ761

Ext Colour
Silver

History
NZ New

Seats
5 seats, Leather

CO2 Emissions
★★★★☆
0 grams/km

Energy Economy
★★★★☆
Annual fuel cost of \$1,620

Cost per year is an estimate based on electricity price of \$0.27 per kWh and an average distance of 14000 km. Includes Road User Charges (RUC). Emissions and Energy Economy figures standardised to 3P WLTP.
Stock ID: 23596



AJ Motors Henderson | Phone 0800 566 789 | Email prestige@ajmotors.co.nz
34 Paramount Drive, Henderson, Auckland 0610, New Zealand
www.ajmotors.co.nz

* AJ Motors Henderson is not a lender nor a financial adviser. Any amounts displayed should not be seen as an offer of finance or taken as financial advice. The interest rate, fees and loan term used in this calculation may not actually represent those available from lenders. Actual interest rates, fees and loan terms will vary per lender and are typically based on an assessment of your credit risk and responsible lending criteria. Any repayment amounts displayed are indicative only and have been calculated using several other indicative inputs. The interest rate used in this calculation is an arbitrary 13.95%, however exact interest rates vary per lender. The term of the loan used in this calculation is 60 month. Exact terms available vary per lender although options typically include 6, 12, 18, 24, 36, 48 and 60 months. This calculation also includes two typical mandatory fees charged by lenders. These are an account admin fee of \$2.50 per month (other payment frequencies may be available) and a one-off establishment fee of \$523.00. Typically, this fee can be paid upfront or, as in this calculation, be capitalised over the contract term, ie. included in the loan amount. These fees can vary per lender and other non-mandatory fees and charges may also apply. The total amount of repayments has been calculated by multiplying 260 weekly repayments (based on a 60 month term) by the weekly repayment amount of \$271.46 which equals \$70,578.47. This calculator does not consider any of your own personal circumstances and we strongly suggest you seek budgeting advice prior to committing to any loan contract. Responsible lending criteria and lender terms and conditions will likely apply to any finalised loan contract. Proof of security and/or vehicle insurance may also be required before proceeding.