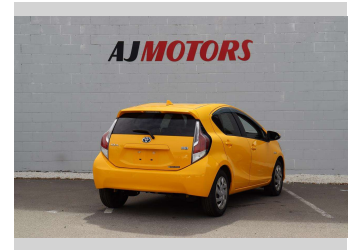
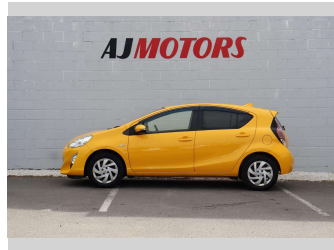
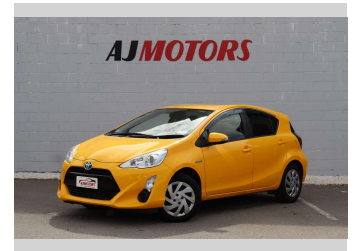
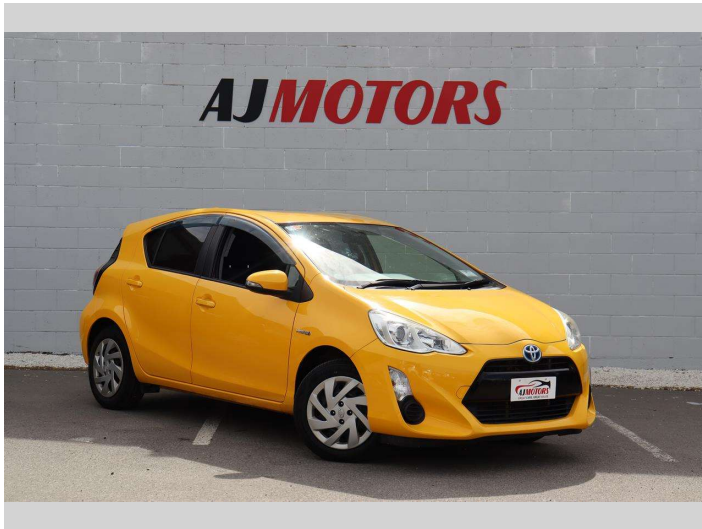



2015 Toyota Aqua 1.5 push start button



Purchase Price **POA**
Includes GST, Registration & Licensing

Finance may be available on this vehicle. Ask one of our friendly staff for more information.



Gain peace of mind with Mechanical Breakdown Insurance. **Ask us how.**



Top features

- » ABS
- » Auto air-condition
- » Auto headlight
- » Child seat anchor poin...
- » Eco Mode
- » Electric Mirrors (Retr...
- » EV mode
- » Push button start
- » Rear Wiper
- » Smart key system with...
- » Traction control

Body Style
4 door, Hatchback

Odometer
119,300 km

Engine
1500 cc, Hybrid

Fuel Type
Hybrid

Transmission
Automatic, 2WD

Wheels
15", Hubcap

VIN
7AT0H65YX24471727

Interior
Black, Plastic

Safety



Based on 2023 UCSR rating for 12-20 models

Reg No.

-

Ext Colour
Yellow

History
Ex-Overseas

Seats
5 seats, Cloth

CO2 Emissions
★★★★☆
86 grams/km

Energy Economy
★★★★☆

Annual fuel cost of \$1,410
3.6L per 100km

Cost per year is an estimate based on petrol price of \$2.80 per litre and an average distance of 14000 km. Emissions and Energy Economy figures standardised to 3P WLTP.

Stock ID: 23237



AJ Motors Christchurch | Phone 0800 566 789 | Email christchurch@ajmotors.co.nz
207 Main South Road, Hornby, Christchurch 8042, New Zealand
www.ajmotors.co.nz