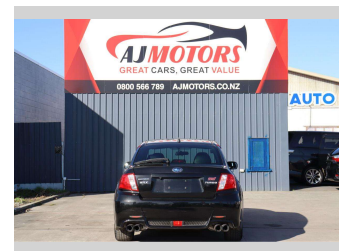
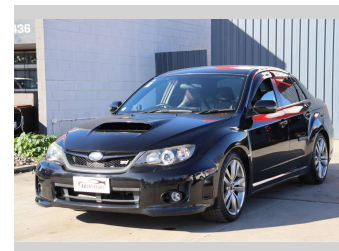
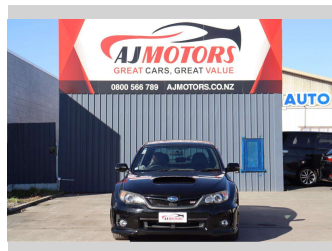



2012 Subaru Impreza WRX STI A-Line



Purchase Price **\$19,988**

Includes GST
Excludes on-road costs of \$695

Finance may be available on this vehicle. Ask one of our friendly staff for more information.



Gain peace of mind with Mechanical Breakdown Insurance. **Ask us how.**



Top features

- » ABS
- » Adaptive Cruise Contro...
- » Air Conditioning
- » Alloy Wheels
- » Auto air-condition
- » Bluetooth
- » Central Locking
- » Central Locking
- » Child seat anchor poin...
- » Dynamic Chassis Contro...
- » Electric Mirrors
- » Fog Lights
- » Heated Seats
- » Inside rear view mirro...
- » Keyless entry
- » Leather Seats
- » Multi-function steerin...
- » Paddle Gear Shift

Body Style
4 door, Sedan

Odometer
106,500 km

Engine
2500 cc, Internal Combustion

Fuel Type
Petrol

Transmission
Automatic, AWD

Wheels
18", Custom Alloys

VIN
7AT0GF09X24367071

Interior
Black, Plastic

Safety



Based on 2023 UCSR rating for 07-11 models

Reg No.
-

Ext Colour
Black

History
Ex-Overseas

Seats
5 seats, Leather

CO2 Emissions
★☆☆☆☆

275 grams/km

Energy Economy
★☆☆☆☆

**Annual fuel cost of \$4,630
11.8L per 100km**

Cost per year is an estimate based on petrol price of \$2.80 per litre and an average distance of 14000 km. Emissions and Energy Economy figures standardised to 3P WLTP.

Stock ID: 20544



AJ Motors Sockburn | Phone 0800 566 789 | Email sockburn@ajmotors.co.nz
466 Blenheim Road, Sockburn, Christchurch 8042, New Zealand
www.ajmotors.co.nz