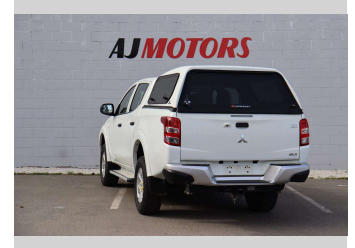


2019 Mitsubishi Triton DC GLX 4WD 5AT 2.4D




Purchase Price **\$33,980**

Includes GST
Excludes on-road costs of \$295

Indicative repayments

\$219.72 per week*

Based on a 48 month term & no deposit.
Total repayments (208) = \$45,701.98



Gain peace of mind with
Mechanical Breakdown Insurance. Ask us how.



Top features

- » 4WD
- » ABS
- » Air Conditioning
- » Alloy Wheels
- » Auto air-condition
- » Bluetooth
- » Central Locking
- » Central Locking
- » Child seat anchor poin...
- » Climate Control
- » Cruise control
- » Cruise Control
- » Electric Mirror
- » Electric Mirrors
- » Fog Lights
- » Hand-free car phone
- » Inside rear view mirro...
- » Multi-function steerin...

Body Style
4 door, Ute

Odometer
71,500 km

Engine
2442 cc, Internal Combustion

Fuel Type
Diesel

Transmission
Automatic, 4WD

Wheels
16", Factory Alloys

VIN
MMAJYKL10JH014145

Interior
Black, Plastic

Safety



Based on 2023 UCSR rating
for 15-21 models

Reg No.
LYF180

Ext Colour
White

History
NZ New

Seats
5 seats, Cloth

CO2 Emissions
★★★☆☆☆
228 grams/km

Energy Economy
★★☆☆☆☆

**Annual fuel cost of \$3,500
8.7L per 100km**

Cost per year is an estimate based
on diesel price of \$2.00 per litre and
an average distance of 14000 km.
Includes Road User Charges (RUC).
Emissions and Energy Economy
figures standardised to 3P WLTP.

Stock ID: 22594



AJ Motors Christchurch | Phone 0800 566 789 | Email
christchurch@ajmotors.co.nz
207 Main South Road, Hornby, Christchurch 8042, New Zealand
www.ajmotors.co.nz

* AJ Motors Christchurch is not a lender nor a financial adviser. Any amounts displayed should not be seen as an offer of finance or taken as financial advice. The interest rate, fees and loan term used in this calculation may not actually represent those available from lenders. Actual interest rates, fees and loan terms will vary per lender and are typically based on an assessment of your credit risk and responsible lending criteria. Any repayment amounts displayed are indicative only and have been calculated using several other indicative inputs. The interest rate used in this calculation is an arbitrary 13.95%, however exact interest rates vary per lender. The term of the loan used in this calculation is 48 month. Exact terms available vary per lender although options typically include 6, 12, 18, 24, 36, 48 and 60 months. This calculation also includes two typical mandatory fees charged by lenders. These are an account admin fee of \$2.50 per month (other payment frequencies may be available) and a one-off establishment fee of \$508.00. Typically, this fee can be paid upfront or, as in this calculation, be capitalised over the contract term, ie. included in the loan amount. These fees can vary per lender and other non-mandatory fees and charges may also apply. The total amount of repayments has been calculated by multiplying 208 weekly repayments (based on a 48 month term) by the weekly repayment amount of \$219.72 which equals \$45,701.98. This calculator does not consider any of your own personal circumstances and we strongly suggest you seek budgeting advice prior to committing to any loan contract. Responsible lending criteria and lender terms and conditions will likely apply to any finalised loan contract. Proof of security and/or vehicle insurance may also be required before proceeding.