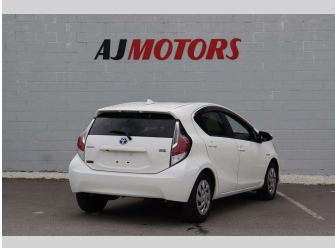
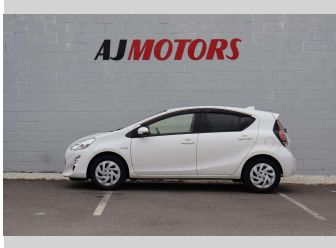


2016 Toyota Aqua 1.5 Hybrid push start Bluetooth



Purchase Price

\$11,980

Includes GST

Excludes on-road costs of \$695

Finance may be available on this vehicle. Ask one of our friendly staff for more information.

finance

NOW

Gain peace of mind with Mechanical Breakdown Insurance. Ask us how.

autosure

INSURANCE

Top features

» ABS

» Auto air-condition

» Auto headlight

» Auto High Beam

» Bluetooth

» Central Locking

» Climate Control

» Eco Mode

» EV mode

» Forward Collision Miti...

» Lane Departure Warning

» Push button start

» Rear Wiper

» Reversing Camera

» Smart key system with...

» Traction control

Body Style

4 door, Hatchback

Odometer

108,100 km

Engine

1500 cc, Hybrid

Fuel Type

Hybrid

Transmission

Automatic, Front Wheel

Wheels

15", Hubcap

VIN

7AT0H65YX24521309

Interior

Black

Safety

5 star

safety rating

Based on 2024 UCSR rating for 12-20 models

Reg No.

-

Ext Colour

White

History

Ex-Overseas

Seats

5 seats

CO2 Emissions

★★★★☆

92 grams/km

Energy Economy

★★★★☆☆

Annual fuel cost of \$1,530

3.9L per 100km

Cost per year is an estimate based on petrol price of \$2.80 per litre and an average distance of 14000 km. Emissions and Energy Economy figures standardised to 3P WLTP.

Stock ID: 23242



AJ Motors Sockburn | Phone 0800 566 789 | Email sockburn@ajmotors.co.nz
393 Ferry Road, Woolston, Christchurch 8023, New Zealand
www.ajmotors.co.nz