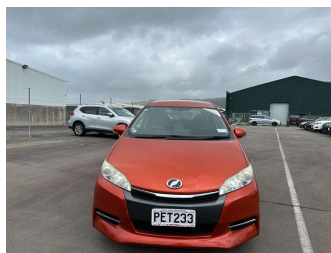
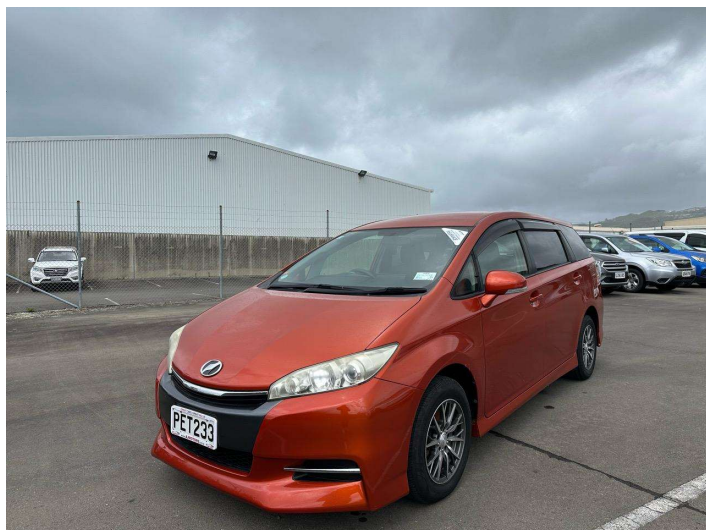


2013 Toyota Wish



Purchase Price **\$12,980**

Includes GST
Excludes on-road costs of \$695

Finance may be available on this vehicle. Ask one of our friendly staff for more information.



Gain peace of mind with Mechanical Breakdown Insurance. **Ask us how.**



Top features

- » ABS
- » Air Conditioning
- » All auto windows
- » Alloy Wheels
- » Apple CarPlay/Andriod
- » Auto air-condition
- » Auto Fold Mirrors
- » Auto headlight
- » Central Locking
- » Central Locking
- » Climate Control
- » Digital Display
- » Drive Mode
- » Eco Mode
- » Electric Mirrors (Retr...
- » Fabric Seats
- » Fabric Seats
- » Keyless entry

Body Style
5 door, MPV

Odometer
102,066 km

Engine
1790 cc, Internal Combustion

Fuel Type
Petrol


Transmission
Automatic, Front Wheel

Wheels
15", Factory Alloys

VIN
7AT0H64BX22004207

Interior
Black, Plastic

Safety



Based on 2024 VSRR rating

Reg No.
PET233

Ext Colour
Orange

History
Ex-Overseas, 1 owner

Seats
7 seats, Fabric

CO2 Emissions
★★★★☆
167 grams/km

Energy Economy
★★★★☆☆

Annual fuel cost of \$2,780
7.1L per 100km

Cost per year is an estimate based on petrol price of \$2.80 per litre and an average distance of 14000 km. Emissions and Energy Economy figures standardised to 3P WLTP.

Stock ID: 24451



AJ Motors Wellington | Phone 0800 566 789 | Email kim@ajmotors.co.nz
35 Annie Huggan Grove, Petone, Lower Hutt 5012, New Zealand
www.ajmotors.co.nz