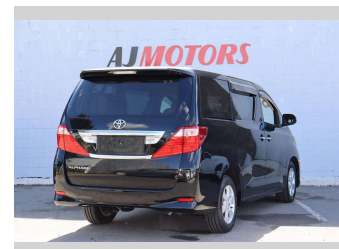
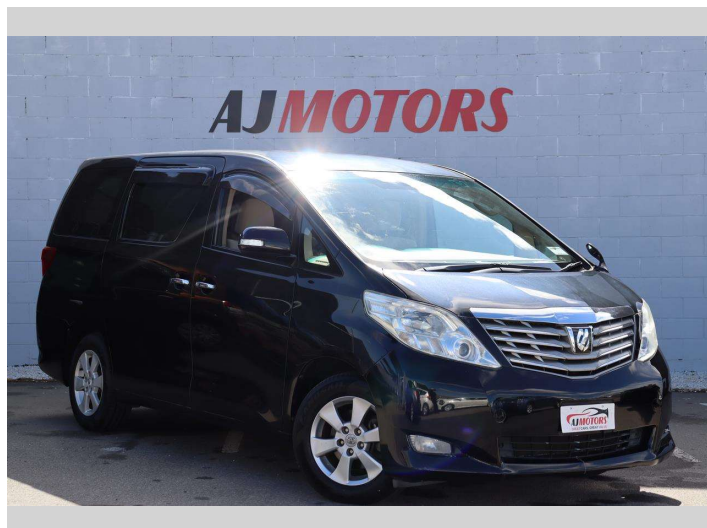



2011 Toyota Alphard 2.4L 8 seater




Purchase Price **\$14,980**

Includes GST
Excludes on-road costs of \$695

Finance may be available on this vehicle. Ask one of our friendly staff for more information.



Gain peace of mind with Mechanical Breakdown Insurance. **Ask us how.**



Top features

- » All auto windows
- » Auto headlight
- » Bluetooth
- » Central Locking
- » Climate Control
- » Electronic slide door
- » Fog Lights
- » Parking Sensors
- » Parking Sensors
- » Power Sliding Door
- » Push button start
- » Smart key system with...
- » Traction control

Body Style
4 door, Van

Odometer
112,800 km

Engine
2400 cc, Internal Combustion

Fuel Type
Petrol

Transmission
Automatic, 2WD

Wheels
16", Factory Alloys

VIN
7AT0H64EX24183136

Interior
Beige, Plastic

Safety



Based on 2023 VSRR rating

Reg No.
-

Ext Colour
Black

History
Ex-Overseas

Seats
8 seats, Cloth

CO2 Emissions
★★★★☆☆
225 grams/km

Energy Economy
★★★★☆☆

Annual fuel cost of \$3,800
9.7L per 100km

Cost per year is an estimate based on petrol price of \$2.80 per litre and an average distance of 14000 km. Emissions and Energy Economy figures standardised to 3P WLTP.

Stock ID: 21422



AJ Motors Sockburn | Phone 0800 566 789 | Email sockburn@ajmotors.co.nz
466 Blenheim Road, Sockburn, Christchurch 8042, New Zealand
www.ajmotors.co.nz