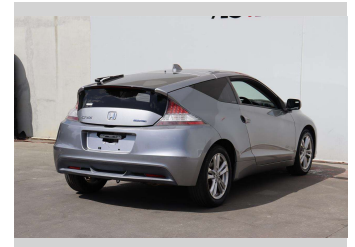


# 2010 Honda CR-Z Alpha Manual



**Purchase Price** **\$9,487**

Includes GST  
Excludes on-road costs of \$695

Finance may be available on this vehicle. Ask one of our friendly staff for more information.



Gain peace of mind with Mechanical Breakdown Insurance. **Ask us how.**



**Top features**

- » Alloy Wheels
- » Auto air-condition
- » Auto headlight
- » Cruise control
- » Eco Mode
- » Electric Mirrors (Retr...
- » Fog Lights
- » Keyless entry
- » Multi-function steerin...
- » Power Steering
- » PWR Mode
- » Rear Wiper
- » Reversing Camera
- » Smart key system with...

Body Style  
**2 door, Coupe**

Odometer  
**90,000 km**

Engine  
**1500 cc, Hybrid**

Fuel Type  
**Hybrid**

Transmission  
**6-Speed Manual, Front Wheel**

Wheels  
**16", Factory Alloys**

VIN  
**7AT08GCLX23002774**

Interior  
**Black, Plastic**

Safety



Based on 2023 VSRR rating

Reg No.  
-

Ext Colour  
**Silver**

History  
**Ex-Overseas**

Seats  
**4 seats, Cloth**

CO2 Emissions  
**★★★★☆**  
**139 grams/km**

Energy Economy  
**★★★★☆☆**

**Annual fuel cost of \$2,270**  
**5.8L per 100km**

Cost per year is an estimate based on petrol price of \$2.80 per litre and an average distance of 14000 km. Emissions and Energy Economy figures standardised to 3P WLTP.

**Stock ID: 15145**



AJ Motors Sockburn | Phone 0800 566 789 | Email sockburn@ajmotors.co.nz  
466 Blenheim Road, Sockburn, Christchurch 8042, New Zealand  
www.ajmotors.co.nz