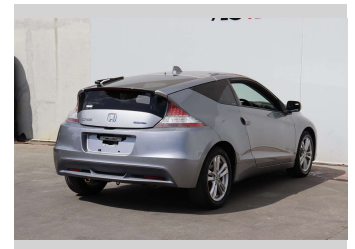
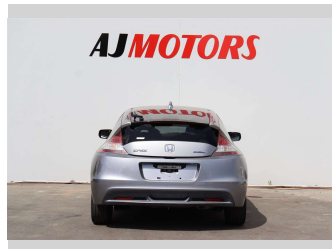
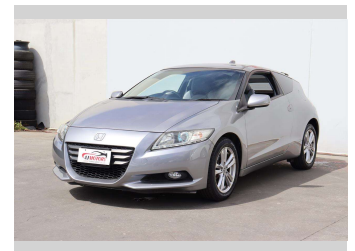



2010 Honda CR-Z Alpha Manual



Purchase Price **\$8,987**

Includes GST
Excludes on-road costs of \$695

Finance may be available on this vehicle. Ask one of our friendly staff for more information.



Gain peace of mind with Mechanical Breakdown Insurance. **Ask us how.**



Top features

- » Alloy Wheels
- » Auto air-condition
- » Auto headlight
- » Cruise control
- » Eco Mode
- » Electric Mirrors (Retr...
- » Fog Lights
- » Keyless entry
- » Multi-function steerin...
- » Power Steering
- » PWR Mode
- » Rear Wiper
- » Reversing Camera
- » Smart key system with...

Body Style
2 door, Coupe

Odometer
90,000 km

Engine
1500 cc, Hybrid

Fuel Type
Hybrid


Transmission
6-Speed Manual, Front Wheel

Wheels
16", Factory Alloys

VIN
7AT08GCLX23002774

Interior
Black, Plastic

Safety



Based on 2023 VSRR rating

Reg No.
-

Ext Colour
Silver

History
Ex-Overseas

Seats
4 seats, Cloth

CO2 Emissions
★★★★☆
139 grams/km

Energy Economy
★★★★☆☆
Annual fuel cost of \$2,270
5.8L per 100km

Cost per year is an estimate based on petrol price of \$2.80 per litre and an average distance of 14000 km. Emissions and Energy Economy figures standardised to 3P WLTP.

Stock ID: 15145



AJ Motors Sockburn | Phone 0800 566 789 | Email sockburn@ajmotors.co.nz
466 Blenheim Road, Sockburn, Christchurch 8042, New Zealand
www.ajmotors.co.nz