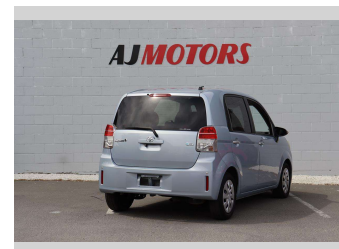



2012 Toyota Spade 1.5 Push Start



Purchase Price **\$8,480**

Includes GST
Excludes on-road costs of \$695

Finance may be available on this vehicle. Ask one of our friendly staff for more information.



Gain peace of mind with Mechanical Breakdown Insurance. **Ask us how.**



Top features

- » ABS
- » Air Conditioning
- » Auto Start Stop
- » Bluetooth
- » Child seat anchor poin...
- » Climate Control
- » Custom Exhaust
- » Electronic slide door
- » Parking Sensors
- » Power Sliding Door
- » Push button start
- » Reversing Camera
- » Smart key system with...
- » Traction control

Body Style
3 door, Hatchback

Odometer
51,800 km

Engine
1500 cc, Internal Combustion

Fuel Type
Petrol


Transmission
Automatic, 2WD

Wheels
15", Hubcap

VIN
7AT0H662X24003507

Interior
Black and Brown, Plastic

Safety



Based on 2023 VSRR rating

Reg No.
-

Ext Colour
NAVYBLUE

History
Ex-Overseas

Seats
5 seats, Cloth

CO2 Emissions
★★★★☆
134 grams/km

Energy Economy
★★★★☆☆
Annual fuel cost of \$2,270
5.8L per 100km

Cost per year is an estimate based on petrol price of \$2.80 per litre and an average distance of 14000 km. Emissions and Energy Economy figures standardised to 3P WLTP.

Stock ID: 22042



AJ Motors Sockburn | Phone 0800 566 789 | Email sockburn@ajmotors.co.nz
466 Blenheim Road, Sockburn, Christchurch 8042, New Zealand
www.ajmotors.co.nz