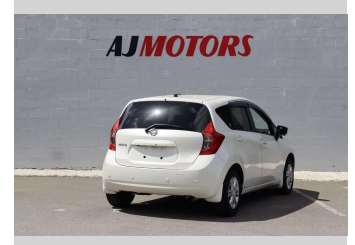
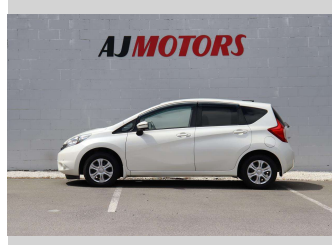



2015 Nissan Note 1.2L PUSH START REV CAM



Purchase Price **\$9,980**

Includes GST
Excludes on-road costs of \$695

Finance may be available on this vehicle. Ask one of our friendly staff for more information.



Gain peace of mind with Mechanical Breakdown Insurance. **Ask us how.**



Top features

- » 360 Degree Reversing C...
- » Push button start
- » ABS
- » Rear Wiper
- » Air Conditioning
- » Smart key system with...
- » Auto headlight
- » Traction control
- » Auto Start Stop
- » Central Locking
- » Forward Collision Mit...
- » Lane Departure Warning
- » Parking Sensors

Body Style
4 door, Hatchback

Odometer
86,000 km

Engine
1200 cc, Internal Combustion

Fuel Type
Petrol

Transmission
Automatic, 2WD

Wheels
14", Hubcap

VIN
7AT0DH79X24403452

Interior
Black, Plastic

Safety



Based on 2024 VSRR rating

Reg No.
-

Ext Colour
White

History
Ex-Overseas

Seats
5 seats, Cloth

CO2 Emissions
★★★★☆
121 grams/km

Energy Economy
★★★★☆☆

Annual fuel cost of \$2,040
5.2L per 100km

Cost per year is an estimate based on petrol price of \$2.80 per litre and an average distance of 14000 km. Emissions and Energy Economy figures standardised to 3P WLTP.

Stock ID: 22048



AJ Motors Sockburn | Phone 0800 566 789 | Email sockburn@ajmotors.co.nz
466 Blenheim Road, Sockburn, Christchurch 8042, New Zealand
www.ajmotors.co.nz