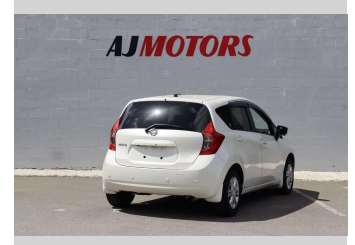
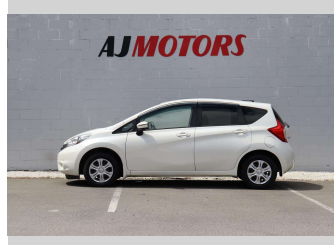


2015 Nissan Note 1.2L PUSH START REV CAM



Purchase Price

\$8,987

Includes GST
Excludes on-road costs of \$695

Finance may be available on this vehicle. Ask one of our friendly staff for more information.

finance
NOW

Gain peace of mind with Mechanical Breakdown Insurance. **Ask us how.**

autosure
INSURANCE

Top features

- » 360 Degree Reversing C...
- » Push button start
- » ABS
- » Rear Wiper
- » Air Conditioning
- » Smart key system with...
- » Auto headlight
- » Traction control
- » Auto Start Stop
- » Central Locking
- » Forward Collision Mit...
- » Lane Departure Warning
- » Parking Sensors

Body Style

4 door, Hatchback

Odometer

86,000 km

Engine

1200 cc, Internal Combustion

Fuel Type

Petrol

Transmission

Automatic, 2WD

Wheels

14", Hubcap

VIN

7AT0DH79X24403452

Interior

Black, Plastic

Safety



Based on 2024 VSRR rating

Reg No.

-

Ext Colour

White

History

Ex-Overseas

Seats

5 seats, Cloth

CO2 Emissions

★★★★☆

121 grams/km

Energy Economy

★★★★☆☆

Annual fuel cost of \$2,040

5.2L per 100km

Cost per year is an estimate based on petrol price of \$2.80 per litre and an average distance of 14000 km. Emissions and Energy Economy figures standardised to 3P WLTP.

Stock ID: 22048



AJ Motors Sockburn | Phone 0800 566 789 | Email sockburn@ajmotors.co.nz
393 Ferry Road, Woolston, Christchurch 8023, New Zealand
www.ajmotors.co.nz