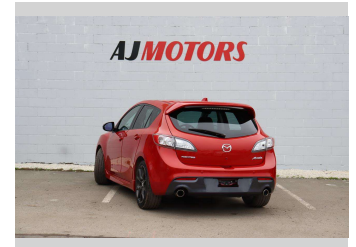
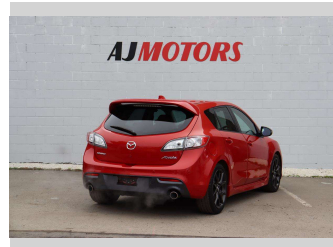
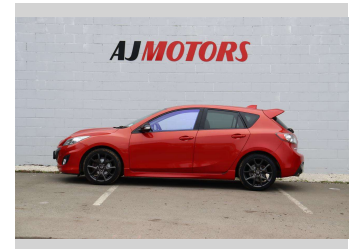
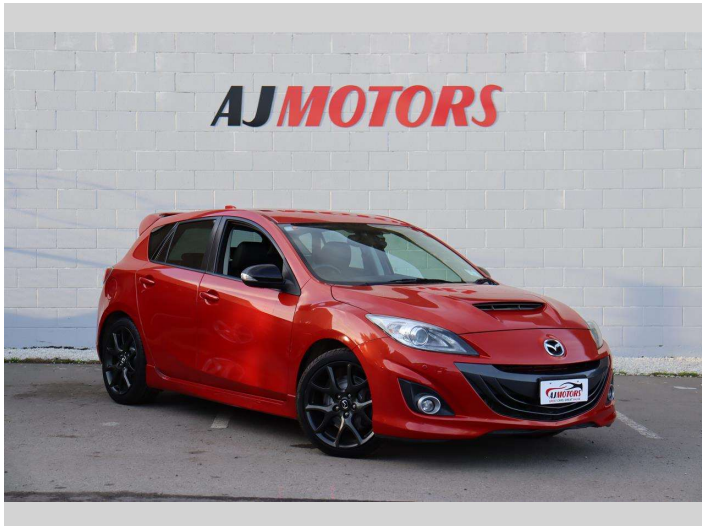



2012 Mazda Axela 6 Speed Manual/Black rims




Purchase Price **\$19,988**
Includes GST
 Excludes on-road costs of \$695

Finance may be available on this vehicle. Ask one of our friendly staff for more information.



Gain peace of mind with Mechanical Breakdown Insurance. **Ask us how.**



- Top features**
- » ABS
 - » Air Conditioning
 - » Alloy Wheels
 - » Auto air-condition
 - » Auto headlight
 - » Bluetooth
 - » Central Locking
 - » Central Locking
 - » Central Locking
 - » Child seat anchor poin...
 - » Climate Control
 - » Dual air-condition
 - » Dual Exhaust
 - » Electric Mirror
 - » Electric Mirrors
 - » electric seats
 - » Fog Lights
 - » heated rear window

Body Style
4 door, Hatchback

Odometer
103,100 km

Engine
2300 cc, Internal Combustion

Fuel Type
Petrol

Transmission
6-Speed Manual, 2WD

Wheels
18", Factory Alloys

VIN
7AT0C13JX24200506

Interior
Black, Plastic

Safety


Based on 2023 UCSR rating for 09-13 models

Reg No.
 -

Ext Colour
Red

History
Ex-Overseas

Seats
5 seats, Half Leather

CO2 Emissions
 ★★☆☆☆☆
257 grams/km

Energy Economy
 ★☆☆☆☆☆

Annual fuel cost of \$4,190
10.7L per 100km

Cost per year is an estimate based on petrol price of \$2.80 per litre and an average distance of 14000 km. Emissions and Energy Economy figures standardised to 3P WLTP.

Stock ID: 21674



AJ Motors Sockburn | Phone 0800 566 789 | Email sockburn@ajmotors.co.nz
 466 Blenheim Road, Sockburn, Christchurch 8042, New Zealand
 www.ajmotors.co.nz