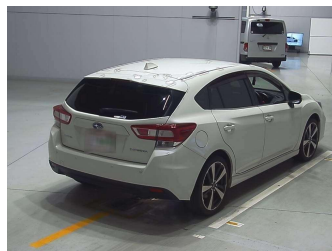
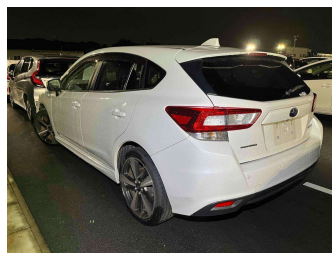
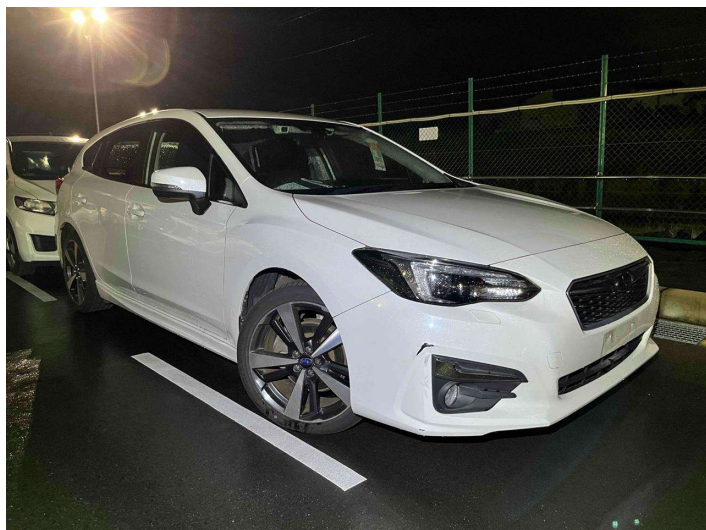


2019 Subaru Impreza



Purchase Price **POA**
Includes GST, Registration & Licensing

Finance may be available on this vehicle. Ask one of our friendly staff for more information.



Gain peace of mind with Mechanical Breakdown Insurance. **Ask us how.**



Top features

None Listed

Body Style

-

Odometer

95,218 km

Engine

2000 cc

Fuel Type

Petrol

Transmission

CVT

Wheels

-

VIN

-

Interior

-

Safety



Based on 2023 UCSR rating for 16-21 models

Reg No.

-

Ext Colour

Pearl

History

Ex-Overseas

Seats

-

CO2 Emissions

★★★★☆

167 grams/km

Energy Economy

★★★☆☆

Annual fuel cost of \$2,780

7.1L per 100km

Cost per year is an estimate based on petrol price of \$2.80 per litre and an average distance of 14000 km. Emissions and Energy Economy figures standardised to 3P WLTP.

Stock ID: 23189



AJ Motors East Tamaki | Phone 0800 566 789 | Email easttamaki@ajmotors.co.nz
53 Springs Road, East Tamaki, Auckland 2013, New Zealand
www.ajmotors.co.nz