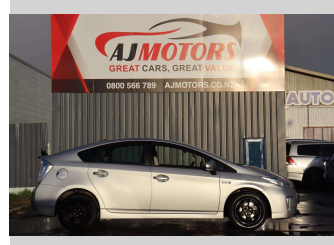
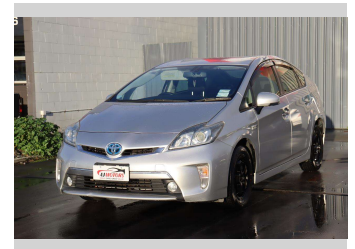
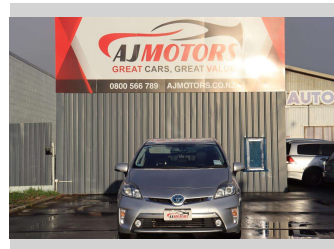
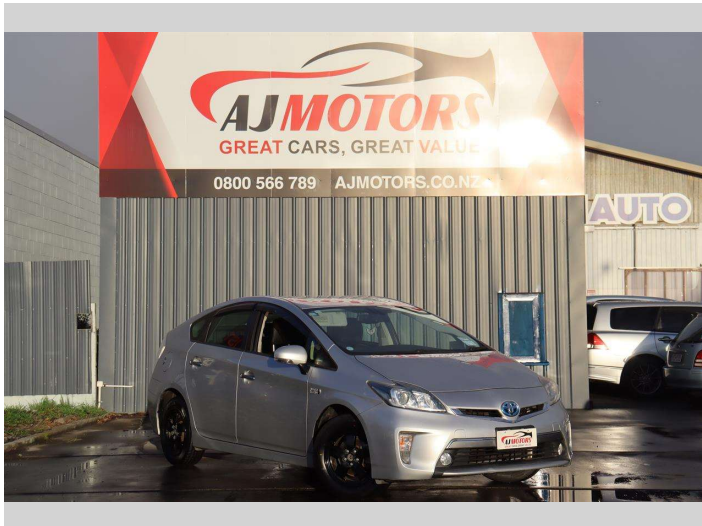


2012 Toyota Prius PHEV



Purchase Price **\$11,480**

Includes GST
Excludes on-road costs of \$295

Finance may be available on this vehicle. Ask one of our friendly staff for more information.



Gain peace of mind with Mechanical Breakdown Insurance. **Ask us how.**



Top features

- » ABS
- » Air Conditioning
- » All auto windows
- » Alloy Wheels
- » Auto air-condition
- » Auto headlight
- » Bluetooth
- » Central Locking
- » Child seat anchor poin...
- » Dynamic Chassis Contro...
- » Eco Mode
- » EV mode
- » Fog Lights
- » Heated Seats
- » Inside rear view mirro...
- » Keyless entry
- » Multi-function steerin...
- » Power Seat Adjustment

Body Style
4 door, Hatchback

Odometer
136,600 km

Engine
1790 cc, Plug-In Hybrid

Fuel Type
Hybrid

Transmission
Automatic

Wheels
15", Custom Alloys

VIN
7AT0H637X20019142

Interior
Black, Plastic

Safety



Based on 2023 UCSR rating for 09-16 models

Reg No.
NNL660

Ext Colour
Silver

History
-

Seats
5 seats, Cloth

CO2 Emissions
★★★★☆
59 grams/km

Energy Economy
★★★★☆

Annual fuel cost not available
2.6L per 100km

Actual figures and cost per year will vary based on proportion of hybrid mode driving and battery charging schedule. Emissions and Energy Economy figures standardised to 3P WLTP.

Stock ID: 21962



AJ Motors Sockburn | Phone 0800 566 789 | Email sockburn@ajmotors.co.nz
466 Blenheim Road, Sockburn, Christchurch 8042, New Zealand
www.ajmotors.co.nz