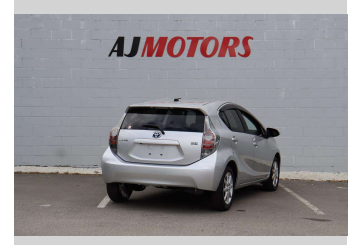
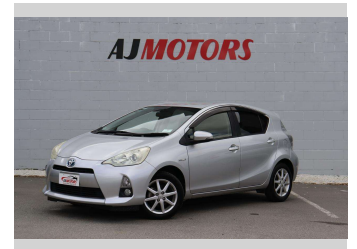


# 2012 Toyota Aqua 1.5 Hybrid push start Bluetooth



Purchase Price

**\$8,980**

Includes GST  
Excludes on-road costs of \$695

Finance may be available on this vehicle. Ask one of our friendly staff for more information.

finance  
**NOW**

Gain peace of mind with Mechanical Breakdown Insurance. **Ask us how.**

**autosure**  
INSURANCE

## Top features

- » ABS
- » Air Conditioning
- » Alloy Wheels
- » Auto headlight
- » Bluetooth
- » Central Locking
- » Child seat anchor poin...
- » Dynamic Chassis Contro...
- » Eco Mode
- » EV mode
- » Inside rear view mirro...
- » Multi-function steerin...
- » Push button start
- » Reversing Camera
- » Smart key system with...

Body Style

**4 door, Hatchback**

Odometer

**105,500 km**

Engine

**1500 cc, Hybrid**

Fuel Type

**Hybrid**

Transmission

**Automatic**

Wheels

**15", Factory Alloys**

VIN

**7AT0H65YX24103747**

Interior

**Black**

Safety



Based on 2023 UCSR rating for 12-20 models

Reg No.

-

Ext Colour

**Silver**

History

**Ex-Overseas**

Seats

**5 seats**

CO2 Emissions

★★★★☆

**86 grams/km**

Energy Economy

★★★★☆

**Annual fuel cost of \$1,410**

**3.6L per 100km**

Cost per year is an estimate based on petrol price of \$2.80 per litre and an average distance of 14000 km. Emissions and Energy Economy figures standardised to 3P WLTP.

**Stock ID: 21293**



AJ Motors Sockburn | Phone 0800 566 789 | Email sockburn@ajmotors.co.nz  
466 Blenheim Road, Sockburn, Christchurch 8042, New Zealand  
www.ajmotors.co.nz